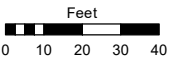
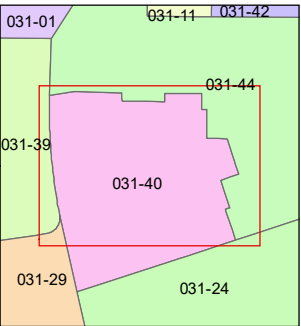
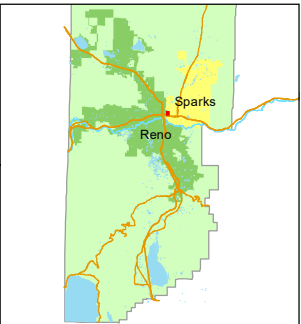


STATE OF NEVADA  
**WASHOE COUNTY**  
**ASSESSOR'S OFFICE**  
1001 East Ninth Street, Building D  
Reno, Nevada 89512  
(775) 328-2231



1 inch = 50 feet



created by: NLH 4/27/2010

updated: JRA 11/20/24

area previously shown on map(s):

NOTE: This map was prepared for the use of the Washoe County Assessor for assessment and illustrative purposes only. It does not represent a survey of the premises. No liability is assumed as to the sufficiency or accuracy of the data delineated hereon.

**(#1811)**  
**AMENDED IRONHORSE VILLAGE**  
**UNIT ONE**  
A CONDOMINIUM

A POR. OF THE NE 1/4  
OF THE SE 1/4 OF SEC. 6,  
T19N - R20E

EL RANCHO

DRIVE

ROUNDHOUSE

ROAD

"G" STREET

A

B

401

UNIT A Lot 1 Bldg.B  
031-401-21  
UNIT M-1  
031-401-22

UNIT A Lot 2 Bldg.A  
031-401-23  
UNIT D  
031-401-24

Lot 4 Bldg.C  
031-401-27  
UNIT P-1R  
031-401-28  
UNIT P-1

Lot 5 Bldg.C  
031-401-29  
UNIT P-1R  
031-401-30  
UNIT P-1

UNIT A Lot 6 Bldg.B  
031-401-31  
UNIT M-1  
031-401-32

UNIT A Lot 7 Bldg.B  
031-401-33  
UNIT M-1  
031-401-34

Lot 8 Bldg.B  
031-401-35  
UNIT M-1  
031-401-36

UNIT A Lot 2 Bldg.A  
031-401-15  
UNIT D  
031-401-16

Lot 3 Bldg.B  
031-401-17  
UNIT M-1  
031-401-18

Lot 1 Bldg.A  
031-401-19  
UNIT A  
031-401-20  
UNIT D

031-401-14  
UNIT M-1  
031-401-13  
Lot 4 Bldg.B  
UNIT A

031-401-12  
UNIT D  
031-401-11  
Lot 5 Bldg.A  
UNIT A

031-401-09  
UNIT M-1  
031-401-10  
UNIT A  
Lot 6 Bldg.B

Lot 7 Bldg.C  
UNIT P-1  
031-401-08  
UNIT P-1R  
031-401-07

Lot 10 Bldg.C  
031-401-06  
UNIT P-1  
031-401-05  
UNIT P-1R

UNIT A Lot 8 Bldg.A  
031-401-01  
UNIT D  
031-401-02

Lot 9 Bldg.B  
031-401-03  
UNIT M-1  
031-401-04  
UNIT A

**FIRST FLOOR UNITS**

NOTES:  
- SEE PG. 031-40 FOR  
COMMON AREA PARCEL  
AND UNIT DETAILS  
- SEE PG. 031-40-S2 FOR  
SECOND FLOOR UNITS