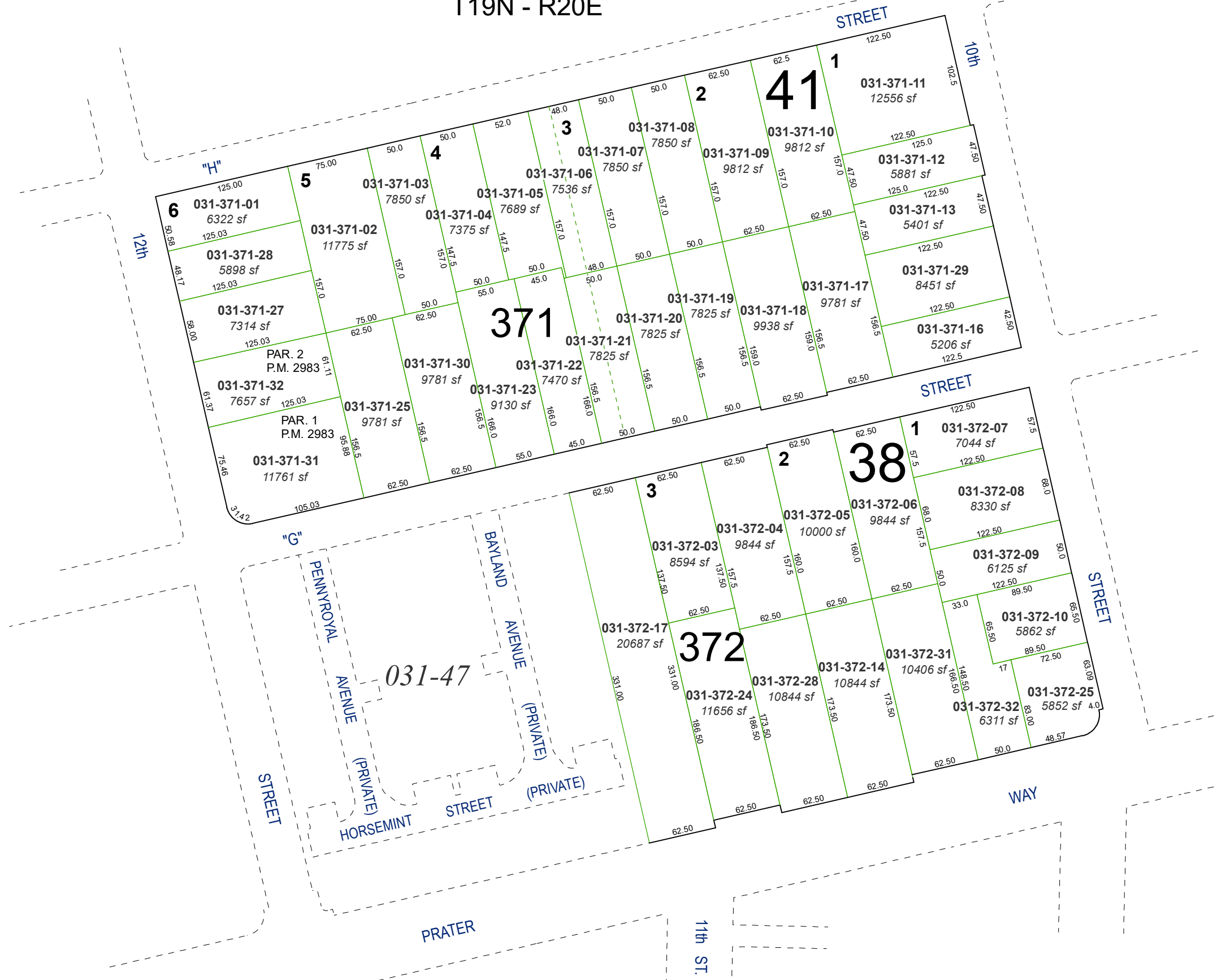


(#213)  
**PRATER ADDITION TO SPARKS**  
POR. OF SE 1/4 SECTION 5  
T19N - R20E

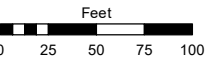


Assessor's Map Number

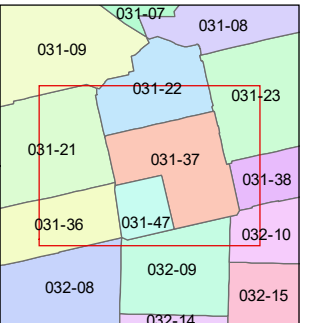
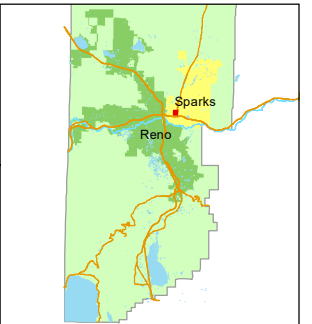
**031-37**

STATE OF NEVADA  
**WASHOE COUNTY**  
**ASSESSOR'S OFFICE**

1001 East Ninth Street, Building D  
Reno, Nevada 89512  
(775) 328-2231



1 inch = 100 feet



created by: NLH 2/19/2010

updated: CFB 12/28/12 KSB 7/12/22

JRA 12/04/23

area previously shown on map(s):

NOTE: This map was prepared for the use of the Washoe County Assessor for assessment and illustrative purposes only. It does not represent a survey of the premises. No liability is assumed as to the sufficiency or accuracy of the data delineated hereon.