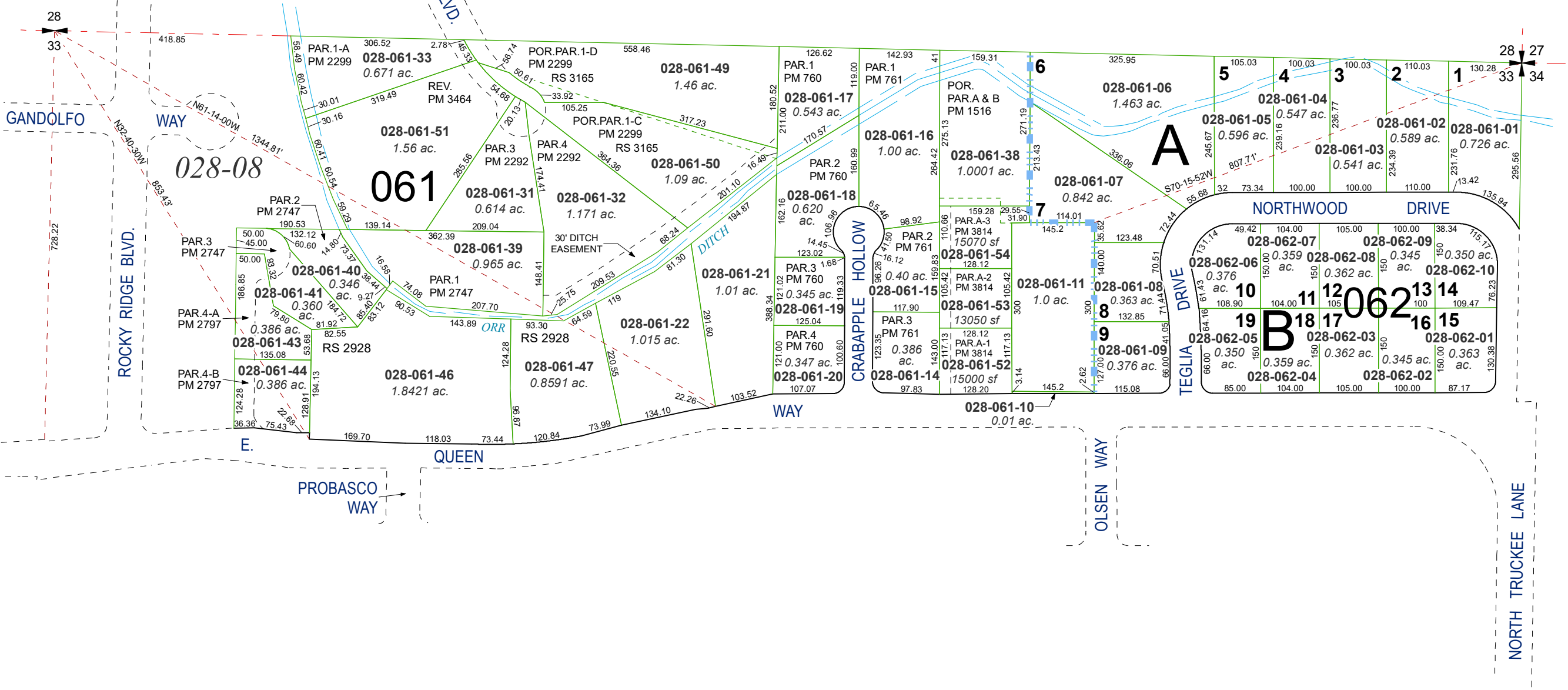


PORTION OF NE ¼ SECTION 33  
T20N - R20E

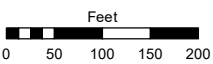
(#2152)  
NORTHWOOD ESTATES  
SUBDIVISION



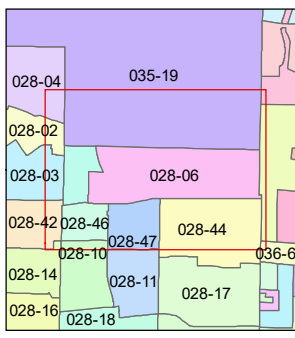
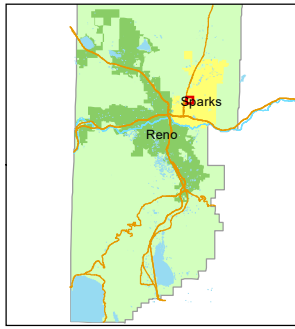
Assessor's Map Number

**028-06**

STATE OF NEVADA  
**WASHOE COUNTY**  
**ASSESSOR'S OFFICE**  
1001 East Ninth Street, Building D  
Reno, Nevada 89512  
(775) 328-2231



1 inch = 200 feet



created by: SR 04/03/2019

updated: KGC 5/14/24

area previously shown on map(s):

NOTE: This map was prepared for the use of the Washoe County Assessor for assessment and illustrative purposes only. It does not represent a survey of the premises. No liability is assumed as to the sufficiency or accuracy of the data delineated hereon.