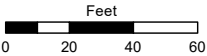
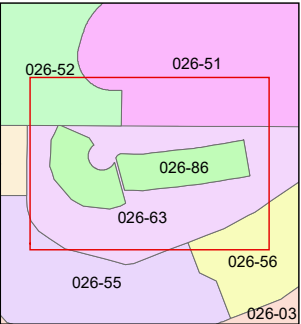
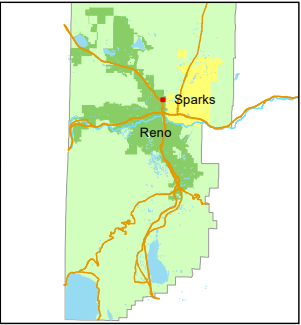


STATE OF NEVADA
WASHOE COUNTY
ASSESSOR'S OFFICE
1001 East Ninth Street, Building D
Reno, Nevada 89512
(775) 328-2231



1 inch = 60 feet



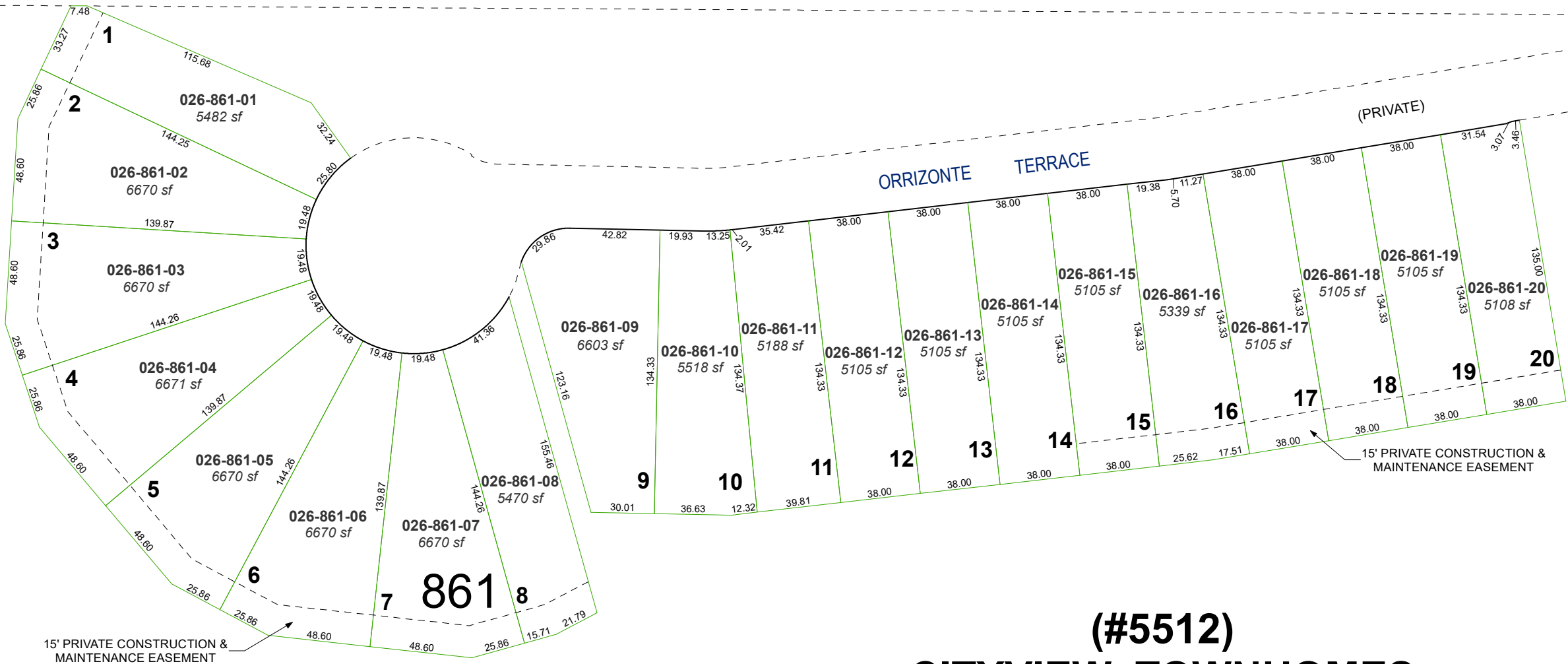
created by: SR 11/01/2022

updated: _____

area previously shown on map(s):

026-63

NOTE: This map was prepared for the use of the Washoe County Assessor for assessment and illustrative purposes only. It does not represent a survey of the premises. No liability is assumed as to the sufficiency or accuracy of the data delineated hereon.



(#5512)
CITYVIEW TOWNHOMES
PORTION OF NW¼ SECTION 31
T20N - R20E