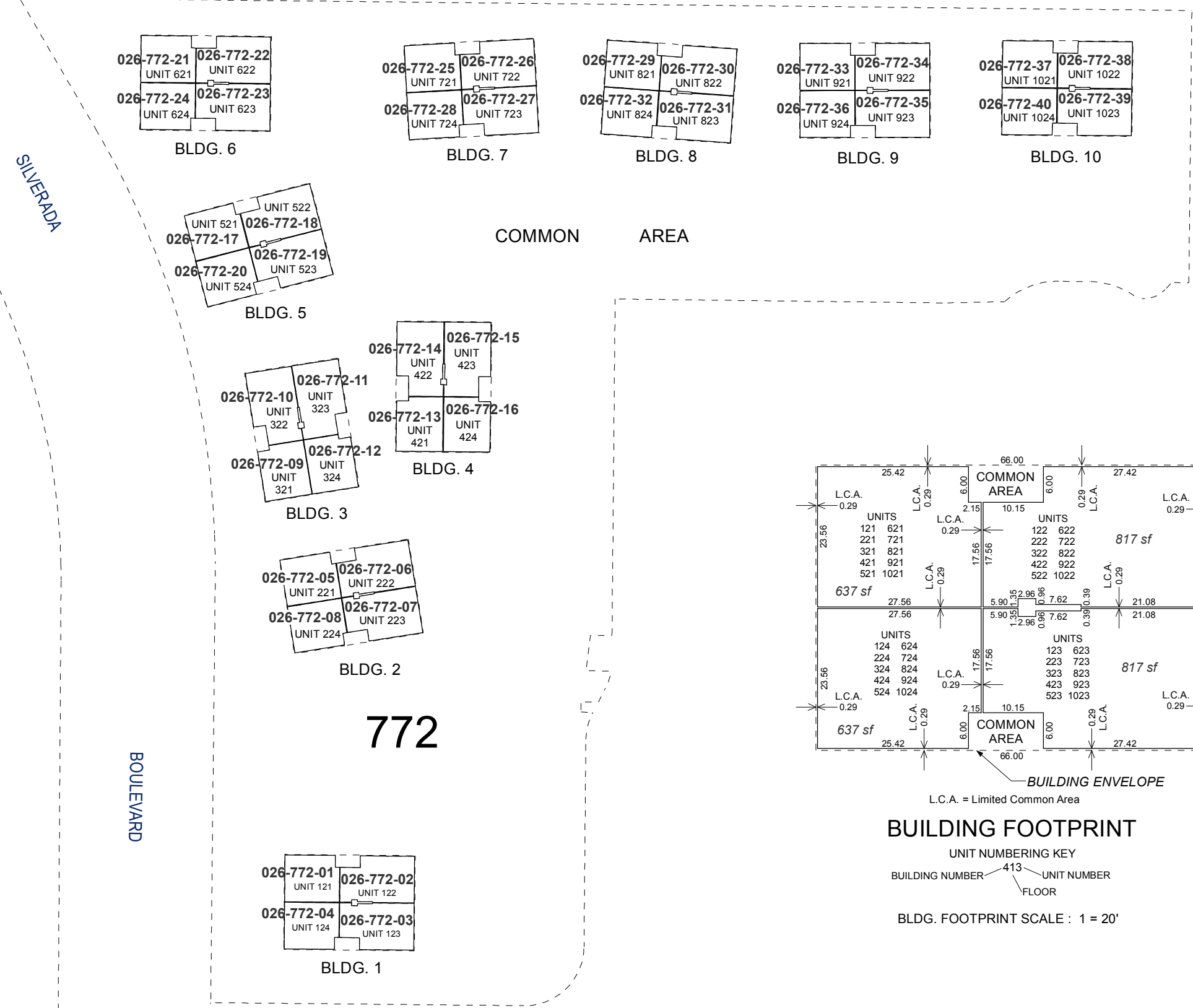


(#4573)
MOSAIC CONDOMINIUMS

SECOND FLOOR

POR. NW 1/4 SEC. 6, T19N - R20E



Assessor's Map Number
026-77-S2

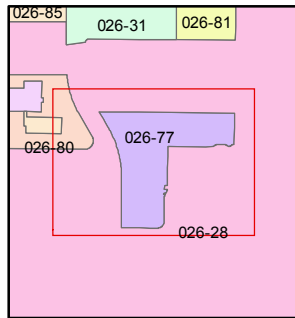
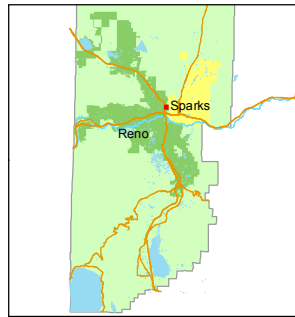
STATE OF NEVADA
WASHOE COUNTY
ASSESSOR'S OFFICE
Michael E. Clark, Assessor

1001 East Ninth Street
Building D
Reno, Nevada 89512
(775) 328-2231



Feet
0 20 40 60

1 inch = 60 feet



created by: TWT 9/14/2015

last updated:

area previously shown on map(s)

026-28

NOTE: This map was prepared for the use of the Washoe County Assessor for assessment and illustrative purposes only. It does not represent a survey of the premises. No liability is assumed as to the sufficiency or accuracy of the data delineated hereon.