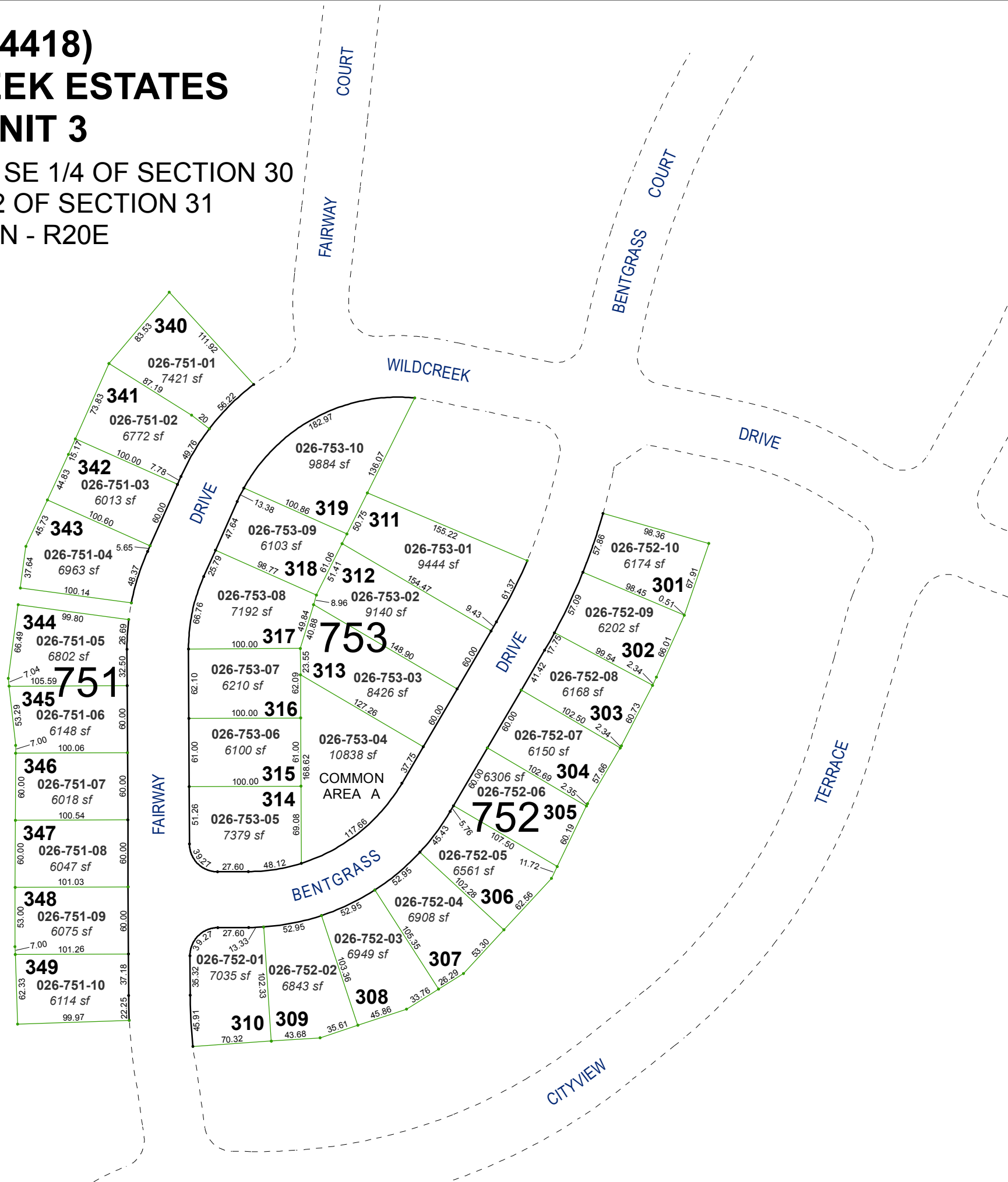


(#4418)
WILDCREEK ESTATES
UNIT 3

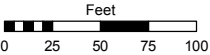
PORTION OF THE SE 1/4 OF SECTION 30
& THE N 1/2 OF SECTION 31
T20N - R20E



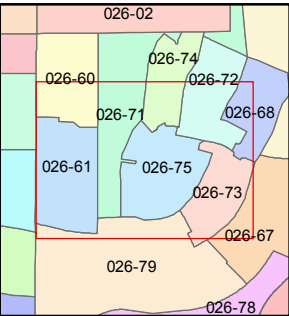
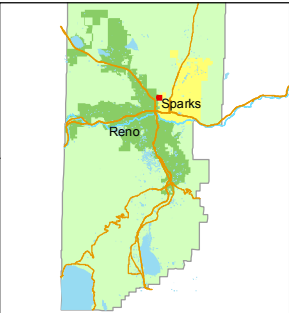
Assessor's Map Number
026-75

STATE OF NEVADA
WASHOE COUNTY
ASSESSOR'S OFFICE
Michael E. Clark, Assessor

1001 East Ninth Street
Building D
Reno, Nevada 89512
(775) 328-2231



1 inch = 100 feet



created by: TWT 9/11/2015

last updated: _____

area previously shown on map(s)

026-71

NOTE: This map was prepared for the use of the Washoe County Assessor for assessment and illustrative purposes only. It does not represent a survey of the premises. No liability is assumed as to the sufficiency or accuracy of the data delineated hereon.