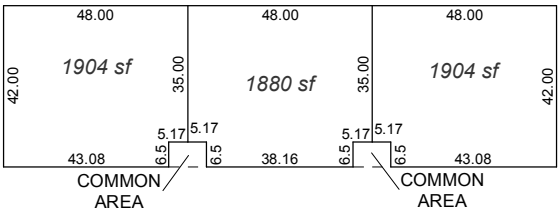


(#3186)
WILDCREEK BUSINESS PARK

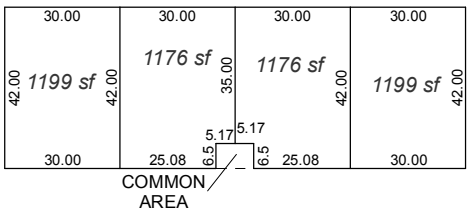
A CONDOMINIUM SUBDIVISION
COMMON AREA ONLY

POR. OF NE ¼ OF SEC. 31
T20N - R20E

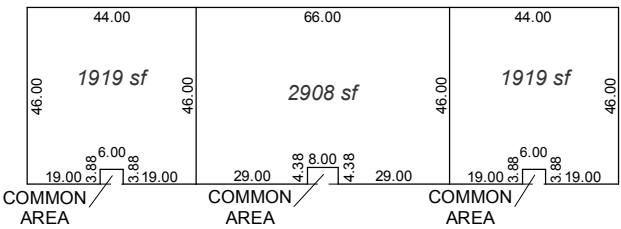
BUILDING TYPE "A"



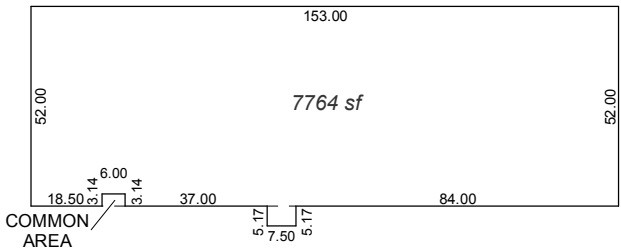
BUILDING TYPE "B"



BUILDING TYPE "C"

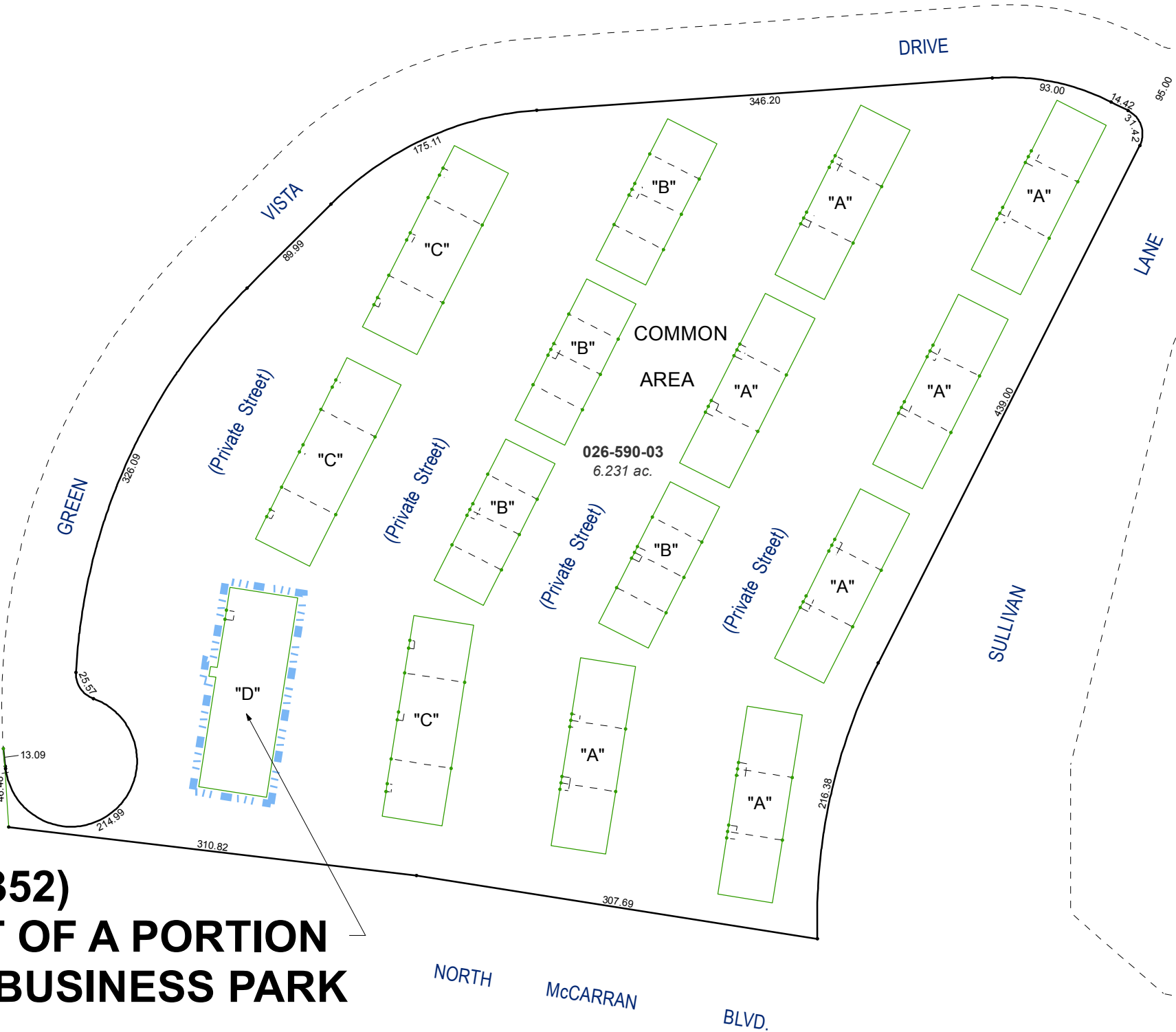


BUILDING TYPE "D"



SCALE : 1" = 50'

(#3352)
**AMENDED PLAT OF A PORTION
OF WILDCREEK BUSINESS PARK**



Assessor's Map Number

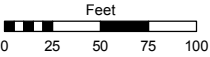
026-59

STATE OF NEVADA

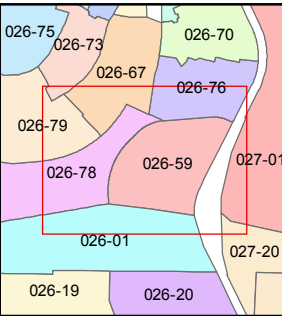
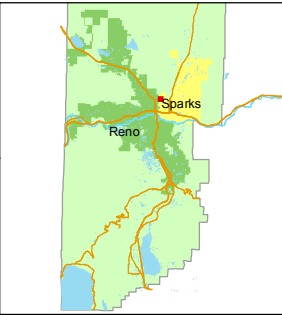
**WASHOE COUNTY
ASSESSOR'S OFFICE**

Michael E. Clark, Assessor

1001 East Ninth Street
Building D
Reno, Nevada 89512
(775) 328-2231



1 inch = 100 feet



created by: TWT 9/1/2015

last updated: _____

area previously shown on map(s) _____

NOTE: This map was prepared for the use of the Washoe County Assessor for assessment and illustrative purposes only. It does not represent a survey of the premises. No liability is assumed as to the sufficiency or accuracy of the data delineated hereon.