

(#2135)
**FALCONCREST UNIT NO. 1
PHASE 1**

A TOWNHOUSE SUBDIVISION

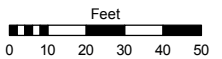
POR. OF SW 1/4 OF SE 1/4 OF SEC. 31
T20N - R20E

Assessor's Map Number

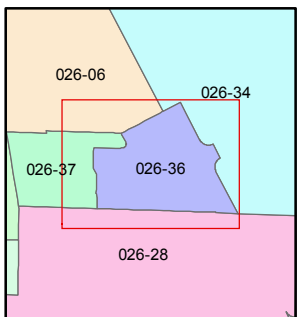
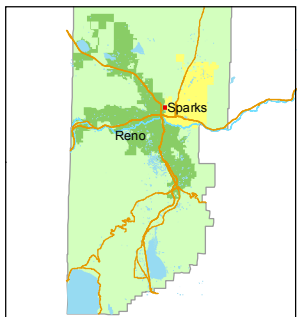
026-36

STATE OF NEVADA
**WASHOE COUNTY
ASSESSOR'S OFFICE**
Michael E. Clark, Assessor

1001 East Ninth Street
Building D
Reno, Nevada 89512
(775) 328-2231



1 inch = 50 feet

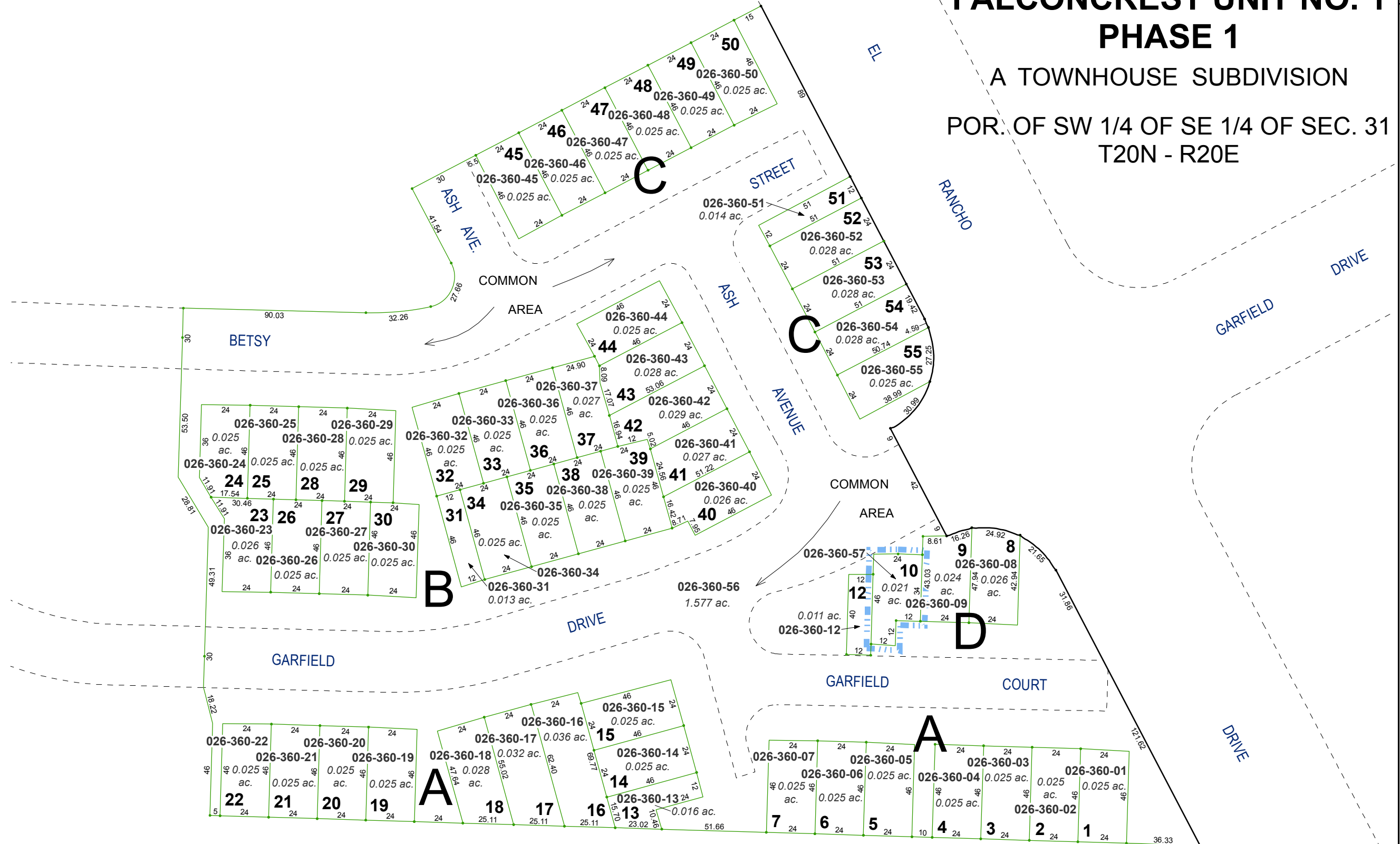


created by: TWT 8/24/2015

last updated: _____

area previously shown on map(s) _____

NOTE: This map was prepared for the use of the Washoe County Assessor for assessment and illustrative purposes only. It does not represent a survey of the premises. No liability is assumed as to the sufficiency or accuracy of the data delineated hereon.



**= (#2175) AMENDED FALCONCREST UNIT NO. 1
PHASE 1**