

(#5095)  
**EDGEWATER AT VIRGINIA LAKE**  
A CONDOMINIUM SUBDIVISION  
POR. OF W ½ SECTION 24  
T19N - R19E

Virginia Lake

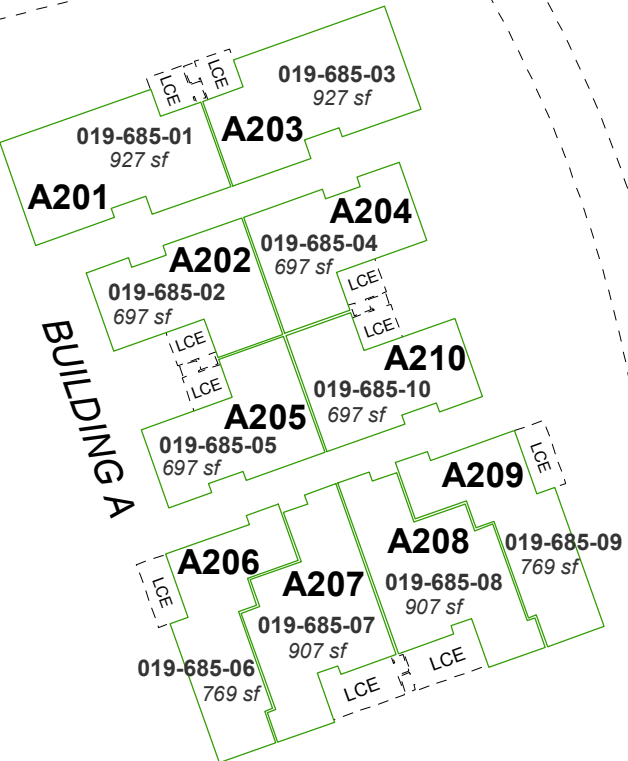
EASTSHORE

DRIVE

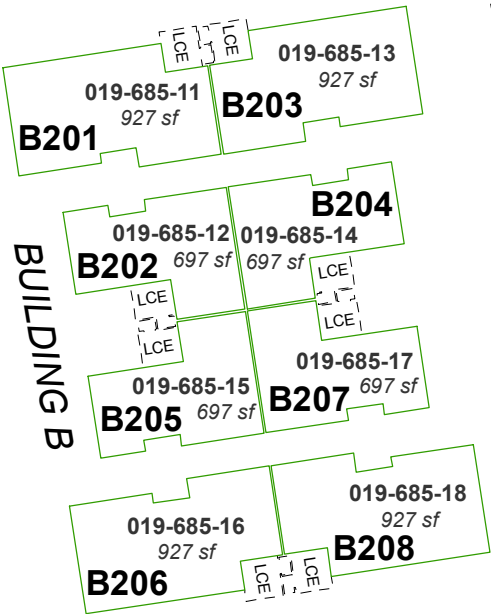
CADILLAC  
PLACE

LYMBERY

STREET

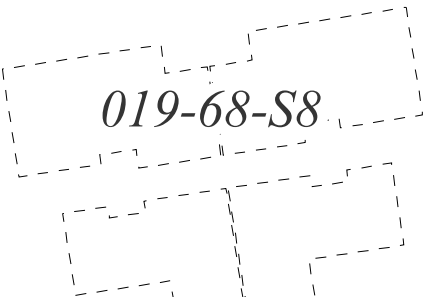


685



**SECOND FLOOR**

NOTES:  
LCE = LIMITED COMMON ELEMENT  
See Page 019-68 for Common Elements.  
See Page 019-68-S1 & 019-68-S2 for  
unit details of Buildings A thru K.



Assessor's Map Number  
**019-68-S5**

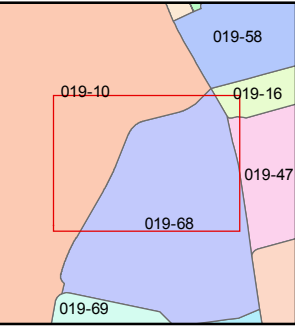
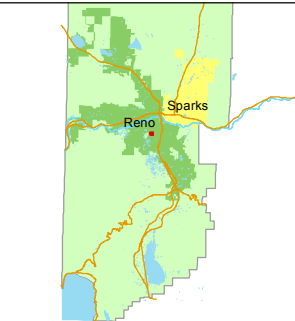
STATE OF NEVADA  
**WASHOE COUNTY**  
ASSESSOR'S OFFICE  
Joshua G. Wilson, Assessor

1001 East Ninth Street  
Building D  
Reno, Nevada 89512  
(775) 328-2231



Feet  
0 10 20 30 40

1 inch = 40 feet



created by: KSB 10/06/2014

last updated: \_\_\_\_\_

area previously shown on map(s)  
019-60

NOTE: This map was prepared for the use of the Washoe County Assessor for assessment and illustrative purposes only. It does not represent a survey of the premises. No liability is assumed as to the sufficiency or accuracy of the data delineated hereon.