

Assessor's Map Number

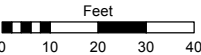
019-47-S1

STATE OF NEVADA

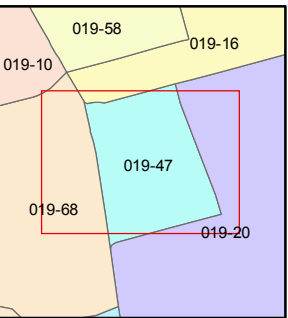
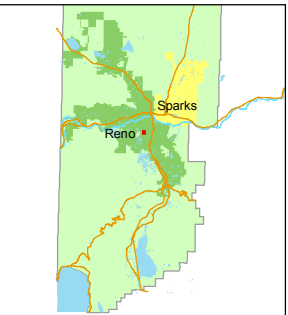
WASHOE COUNTY
ASSESSOR'S OFFICE

Joshua G. Wilson, Assessor

1001 East Ninth Street
Building D
Reno, Nevada 89512
(775) 328-2231



1 inch = 40 feet



created by: TWT 11/24/2014

last updated:

area previously shown on map(s)

019-20

NOTE: This map was prepared for the use of the Washoe County Assessor for assessment and illustrative purposes only. It does not represent a survey of the premises. No liability is assumed as to the sufficiency or accuracy of the data delineated hereon.

(#1959) RENO II CONDOMINIUMS A CONDOMINIUM

1st FLOOR UNITS

