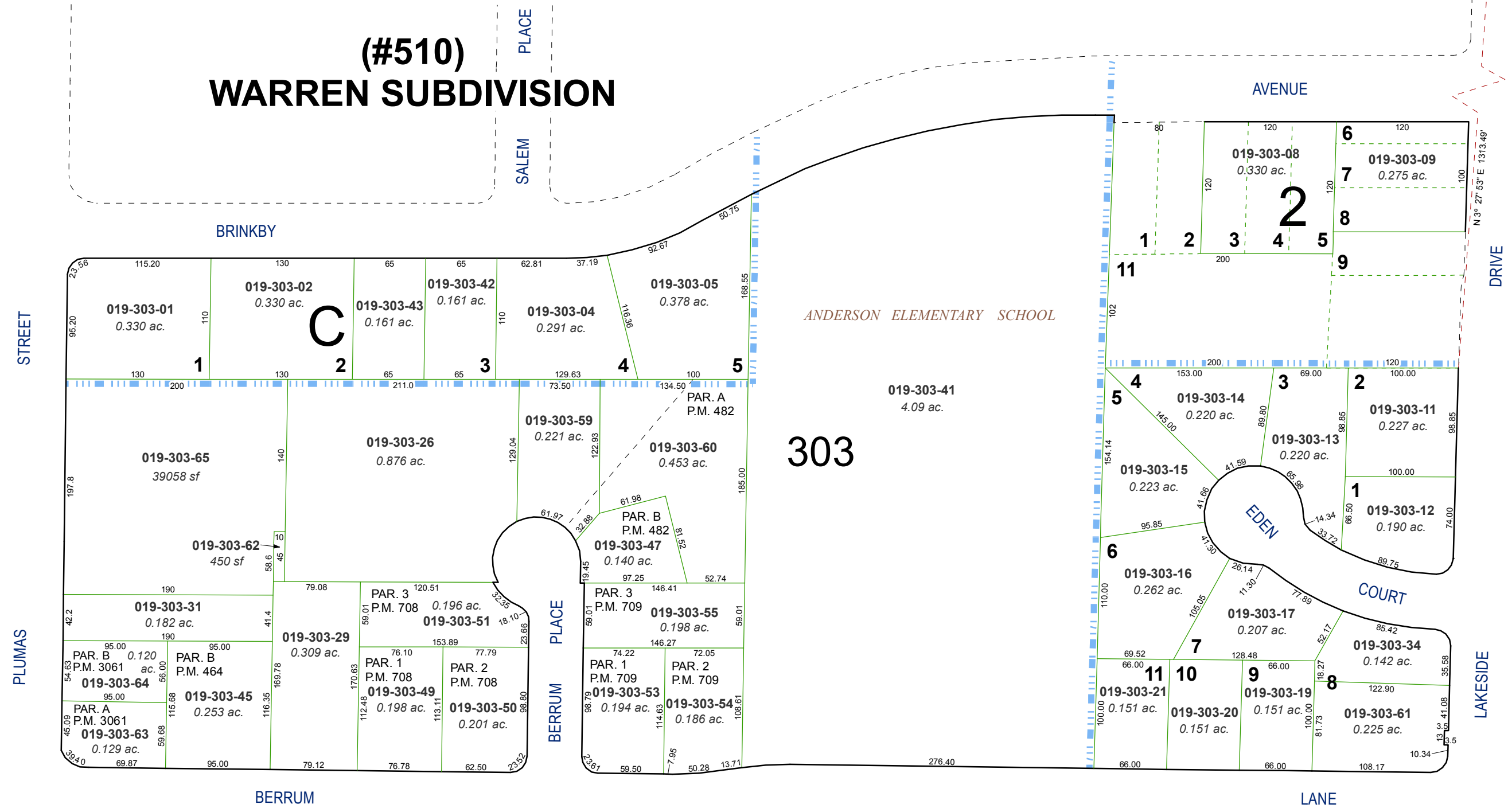


PORTION OF THE SE 1/4 OF SECTION 23
T19N - R19E

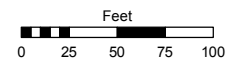
(#267)
BRINKBY SUBDIVISION

(#510)
WARREN SUBDIVISION

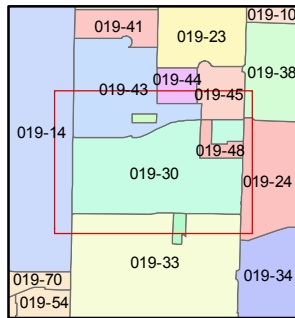
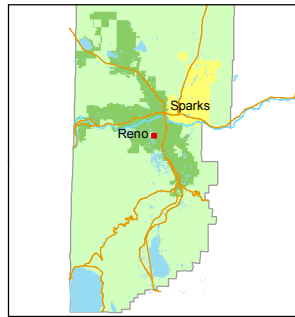


Assessor's Map Number
019-30

STATE OF NEVADA
WASHOE COUNTY
ASSESSOR'S OFFICE
Joshua G. Wilson, Assessor
1001 East Ninth Street
Building D
Reno, Nevada 89512
(775) 328-2231



1 inch = 100 feet



created by: TWT 9/26/2014
last updated: _____
area previously shown on map(s) _____

NOTE: This map was prepared for the use of the Washoe County Assessor for assessment and illustrative purposes only. It does not represent a survey of the premises. No liability is assumed as to the sufficiency or accuracy of the data delineated hereon.