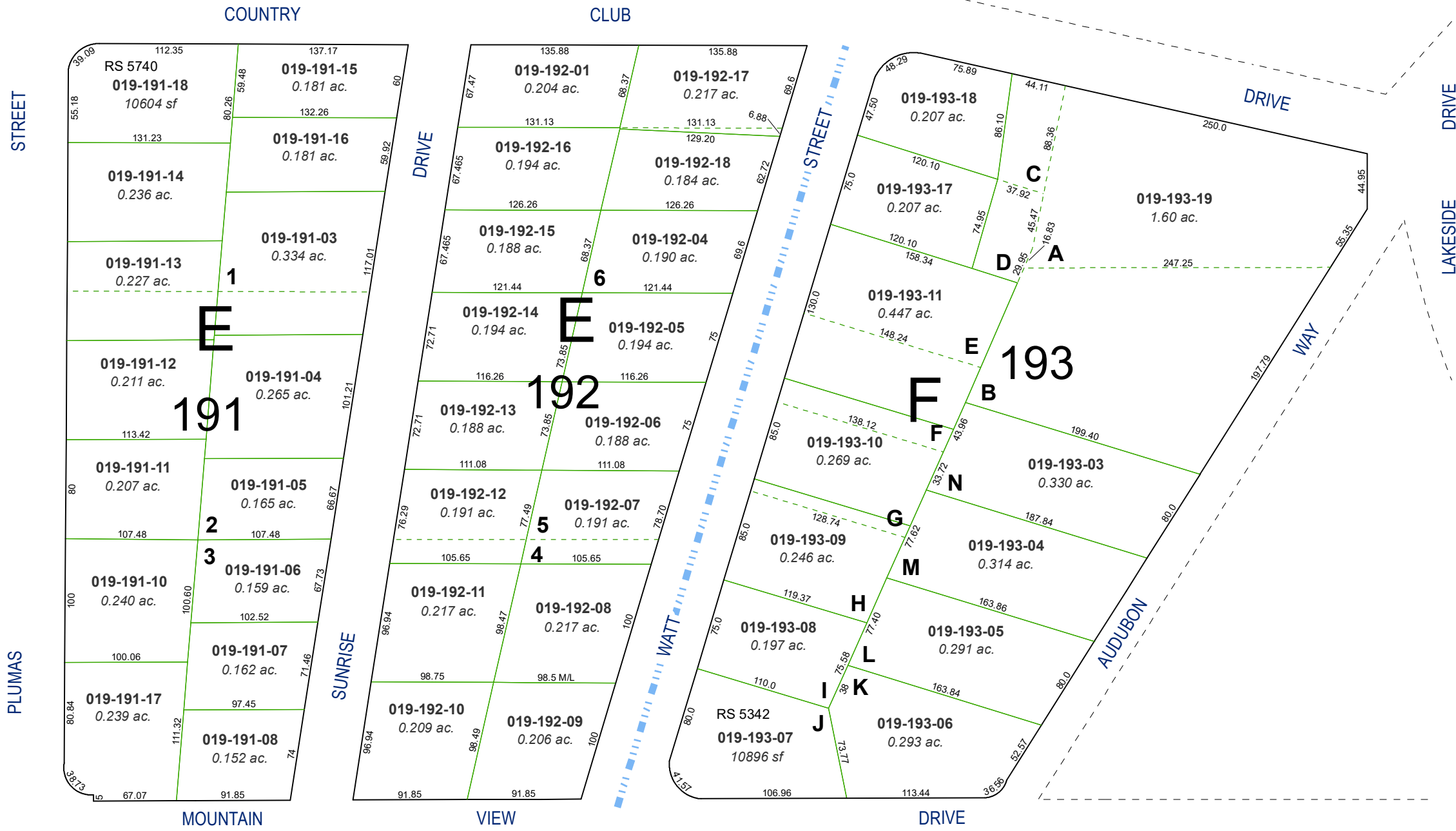


(#234)
COUNTRY CLUB ACRES
AMENDED

PORTION OF THE NE 1/4 OF SECTION 23
T19N - R19E

(#270)
COUNTRY CLUB ACRES
REARRANGEMENT OF BLOCK F
LOTS 1 TO 5

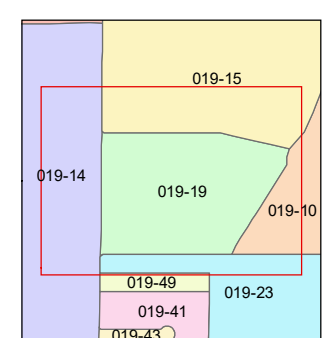
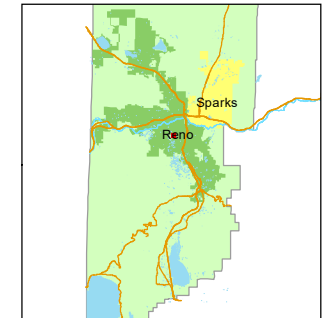


Assessor's Map Number
019-19

STATE OF NEVADA
WASHOE COUNTY
ASSESSOR'S OFFICE
1001 East Ninth Street, Building D
Reno, Nevada 89512
(775) 328-2231



Feet
0 25 50 75 100
1 inch = 100 feet



created by: TWT 9/16/2014
updated: JRA 9/30/21

area previously shown on map(s):

NOTE: This map was prepared for the use of the Washoe County Assessor for assessment and illustrative purposes only. It does not represent a survey of the premises. No liability is assumed as to the sufficiency or accuracy of the data delineated hereon.