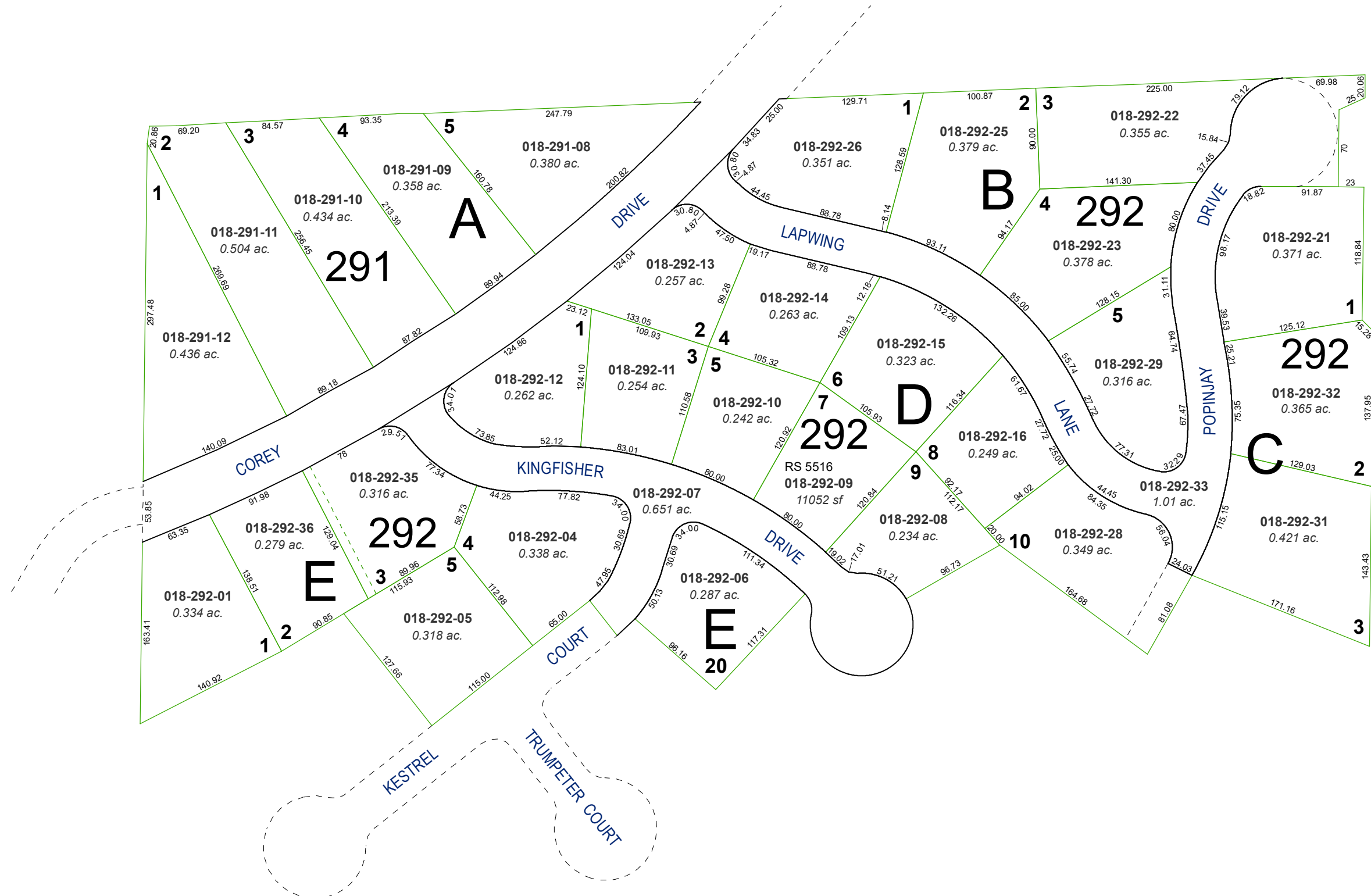


(#2341)
AMENDED PLAT
THE HIGHLANDS

PORTION OF THE SW 1/4 OF THE SE 1/4 OF SECTION 22
T19N - R19E



Assessor's Map Number

018-29

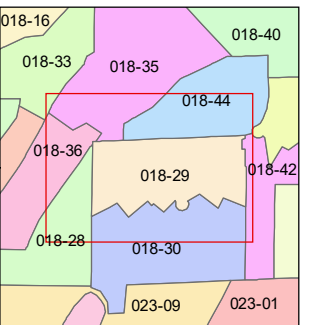
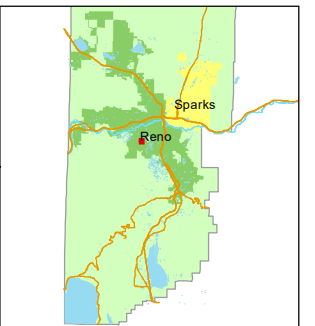
STATE OF NEVADA
WASHOE COUNTY
ASSESSOR'S OFFICE

1001 East Ninth Street, Building D
Reno, Nevada 89512
(775) 328-2231



Feet
0 25 50 75 100

1 inch = 100 feet



created by: TWT 8/14/2014

updated: JRA 9/29/21

area previously shown on map(s):

NOTE: This map was prepared for the use of the Washoe County Assessor for assessment and illustrative purposes only. It does not represent a survey of the premises. No liability is assumed as to the sufficiency or accuracy of the data delineated hereon.