

ROAD

HILLTOP

DRIVE

DOLAN WAY

OUTLOOK

OUTLOOK

DRIVE

DITCH

CHANCE

CHANCE

LAST

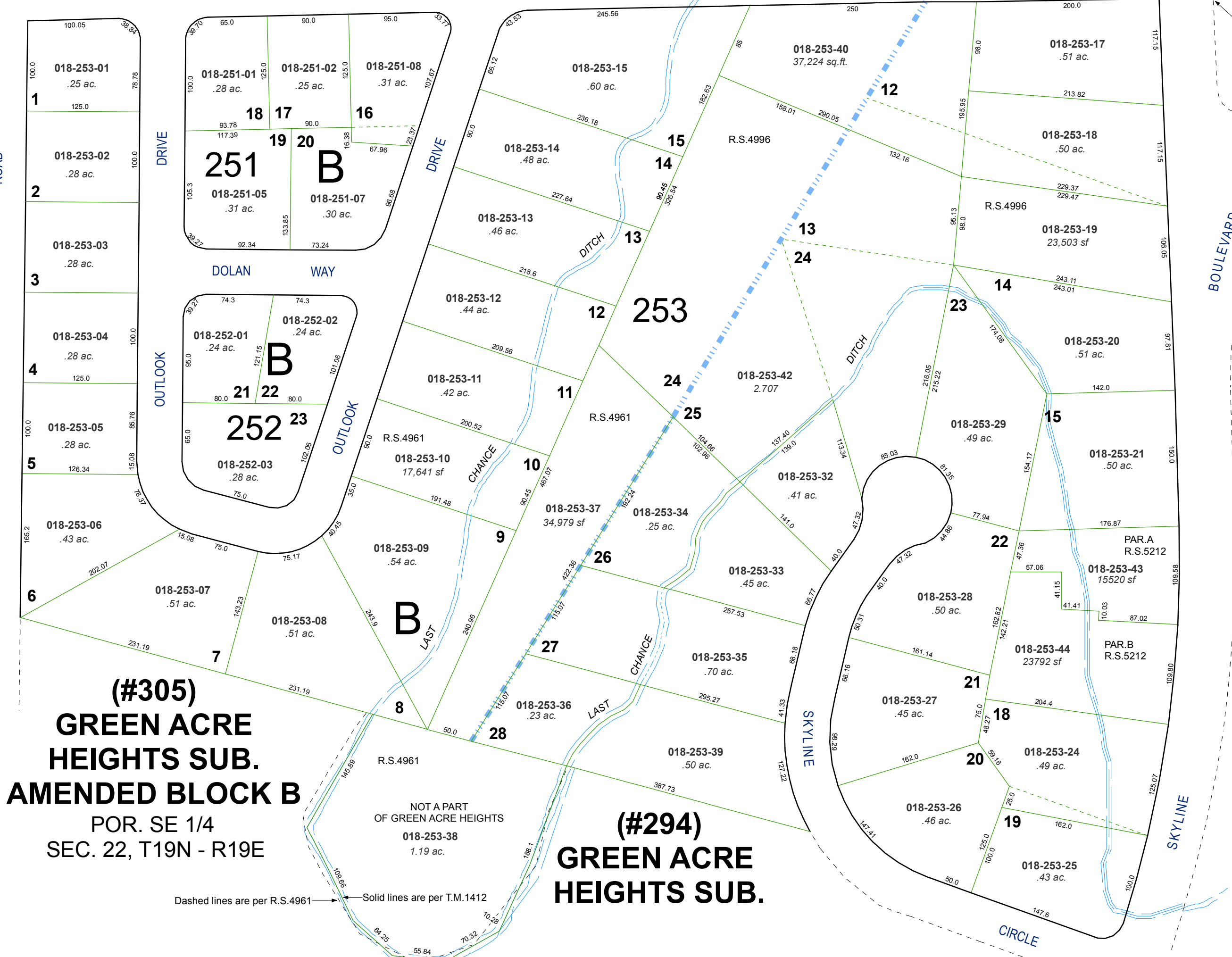
LAST

SKYLINE

SKYLINE

BOULEVARD

CIRCLE



**(#305)  
GREEN ACRE  
HEIGHTS SUB.  
AMENDED BLOCK B**  
POR. SE 1/4  
SEC. 22, T19N - R19E

**(#294)  
GREEN ACRE  
HEIGHTS SUB.**

Dashed lines are per R.S.4961  
Solid lines are per T.M.1412

NOT A PART  
OF GREEN ACRE HEIGHTS  
**018-253-38**  
1.19 ac.

Assessor's Map Number  
**018-25**

STATE OF NEVADA  
**WASHOE COUNTY**  
**ASSESSOR'S OFFICE**  
Joshua G. Wilson, Assessor  
1001 East Ninth Street  
Building D  
Reno, Nevada 89512  
(775) 328-2231

Feet  
0 12.525 50 75 100  
1 inch = 100 feet

created by: CFB 03/15/2010  
last updated:  
area previously shown on map(s)

NOTE: This map was prepared for the use of the Washoe County Assessor for assessment and illustrative purposes only. It does not represent a survey of the premises. No liability is assumed as to the sufficiency or accuracy of the data delineated herein.