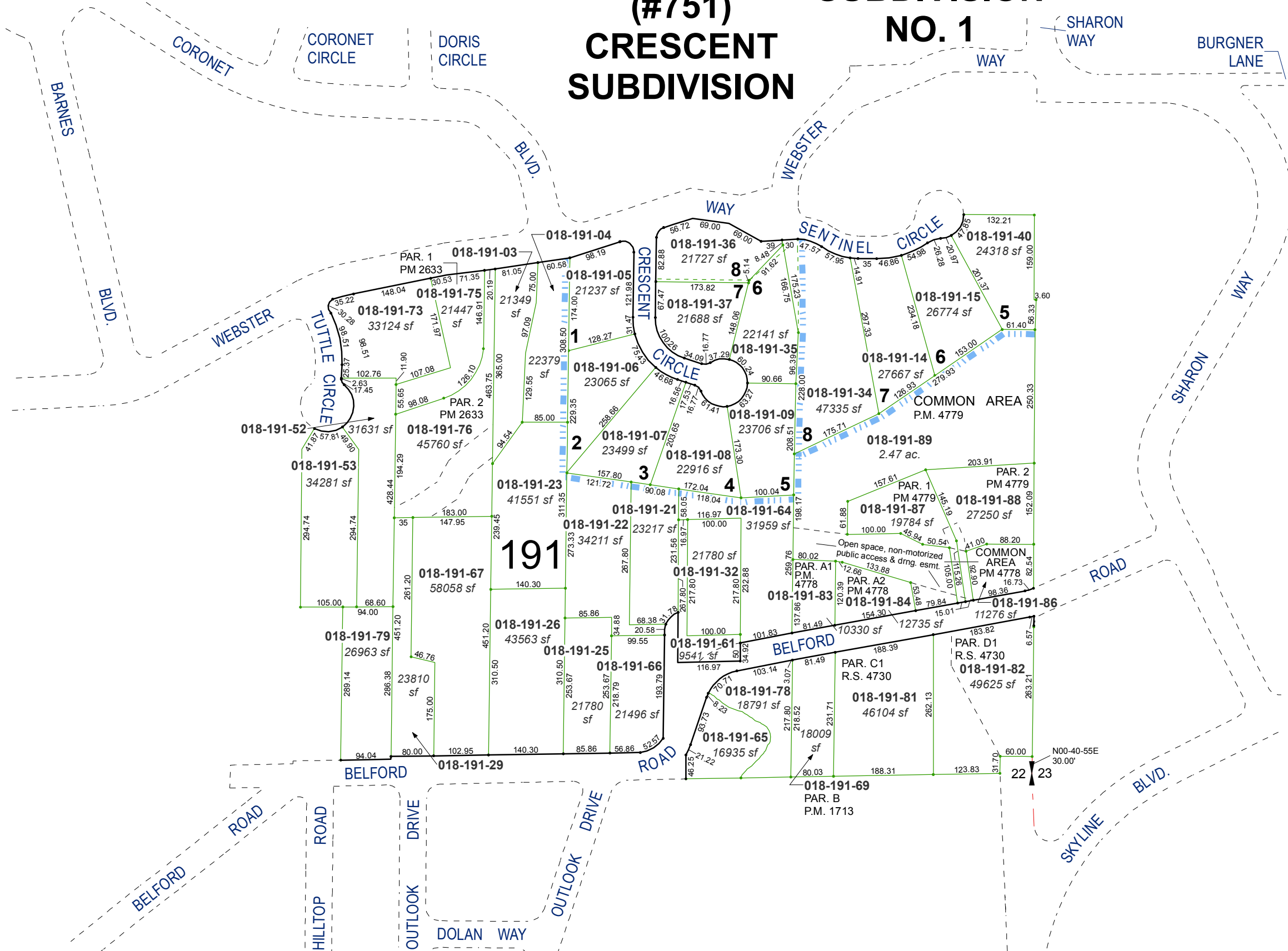


PORTION OF THE NE 1/4 OF SECTION 22
T19N - R19E

(#690)
POUCH
SUBDIVISION
NO. 1

(#751)
CRESCENT
SUBDIVISION

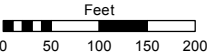


Assessor's Map Number

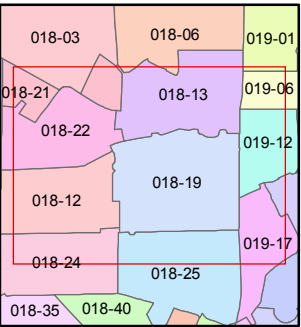
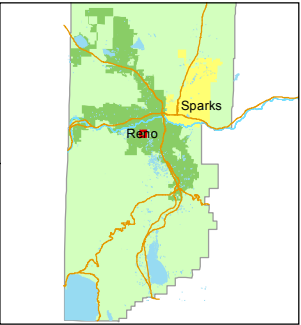
018-19

STATE OF NEVADA
WASHOE COUNTY
ASSESSOR'S OFFICE
Michael E. Clark, Assessor

1001 East Ninth Street
Building D
Reno, Nevada 89512
(775) 328-2231



1 inch = 200 feet



created by: TWT 8/01/2014

last updated: TWT 2/02/2015

area previously shown on map(s)

NOTE: This map was prepared for the use of the Washoe County Assessor for assessment and illustrative purposes only. It does not represent a survey of the premises. No liability is assumed as to the sufficiency or accuracy of the data delineated hereon.