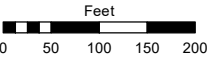
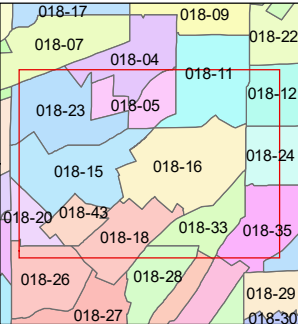
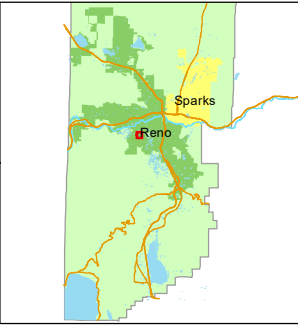


STATE OF NEVADA
WASHOE COUNTY
ASSESSOR'S OFFICE
1001 East Ninth Street, Building D
Reno, Nevada 89512
(775) 328-2231



1 inch = 200 feet



created by: TWT 7/30/2014

updated: JRA 9/27/21 JRA 4/28/22

area previously shown on map(s):

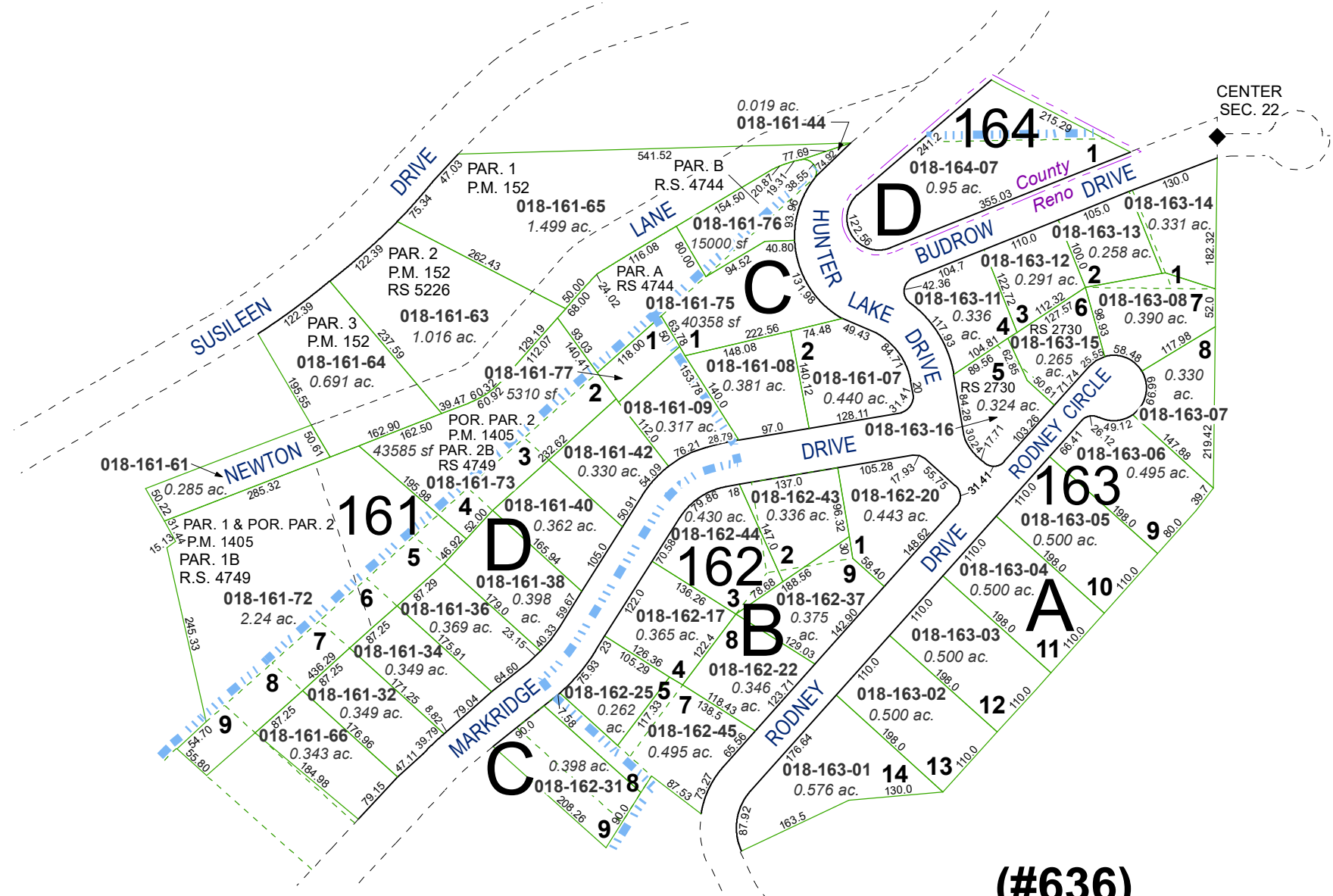
NOTE: This map was prepared for the use of the Washoe County Assessor for assessment and illustrative purposes only. It does not represent a survey of the premises. No liability is assumed as to the sufficiency or accuracy of the data delineated hereon.

PORTION OF THE WEST 1/2 OF SECTION 22

T19N - R19E

ANNEX. T.M. 3655

ORD. 4950



(#606)
AMENDED
MARKRIDGE SUBDIVISION

(#636)
MARKRIDGE SUBDIVISION NO. 2