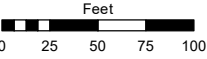


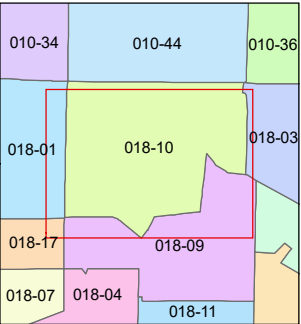
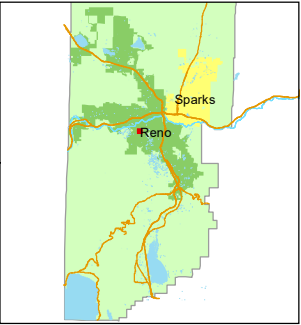
018-10

STATE OF NEVADA
WASHOE COUNTY
ASSESSOR'S OFFICE

1001 East Ninth Street, Building D
Reno, Nevada 89512
(775) 328-2231



1 inch = 100 feet

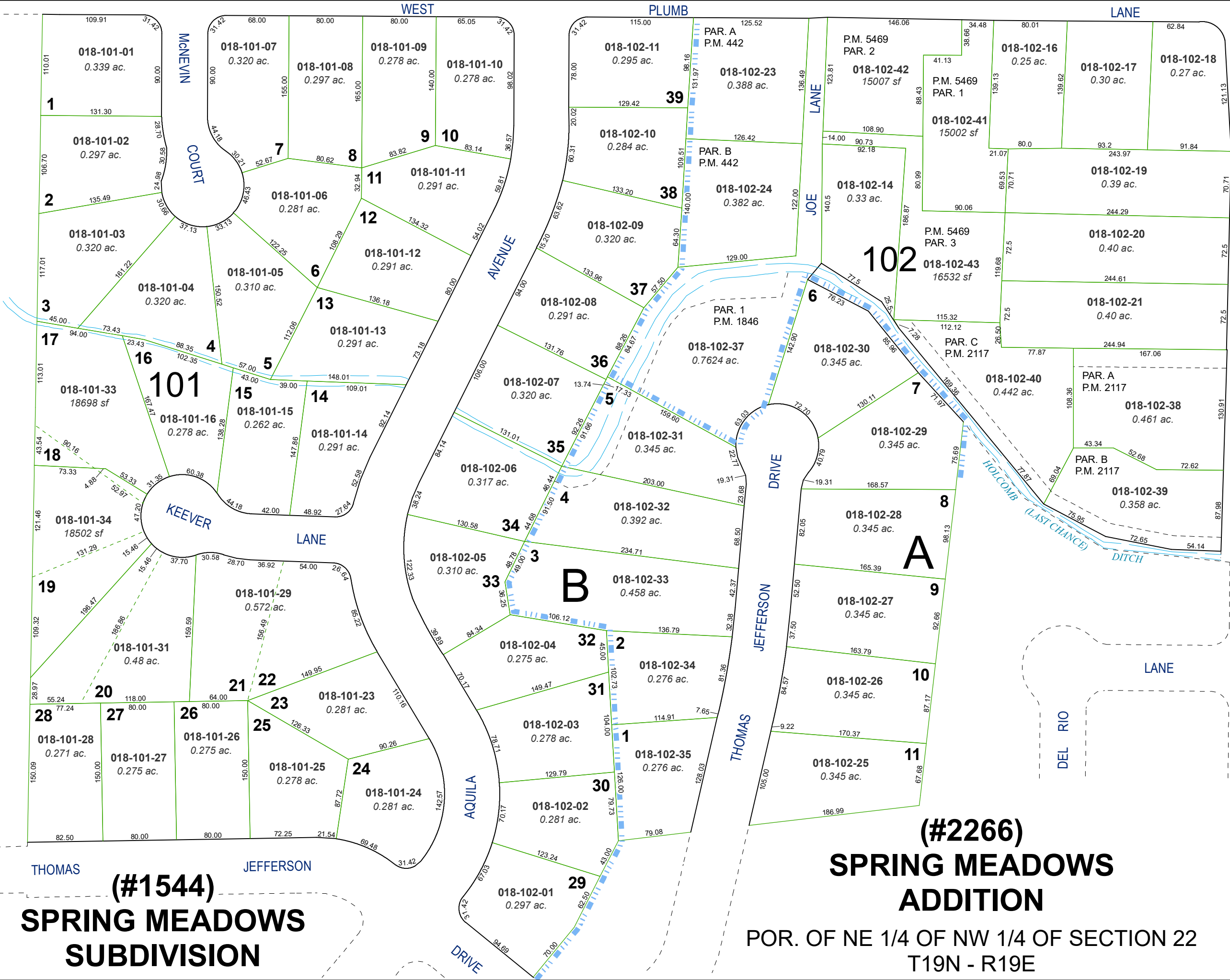


created by: TWT 7/25/2014

updated: JKF 6/22/20

area previously shown on map(s):

NOTE: This map was prepared for the use of the Washoe County Assessor for assessment and illustrative purposes only. It does not represent a survey of the premises. No liability is assumed as to the sufficiency or accuracy of the data delineated hereon.



(#2266)
SPRING MEADOWS
ADDITION
POR. OF NE 1/4 OF NW 1/4 OF SECTION 22
T19N - R19E