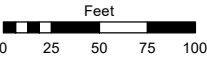
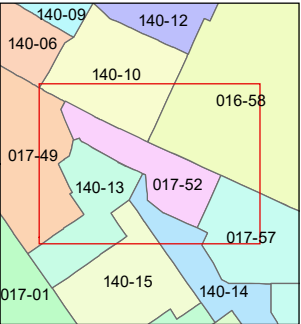
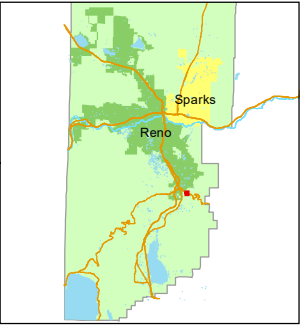


STATE OF NEVADA
WASHOE COUNTY
ASSESSOR'S OFFICE

1001 East Ninth Street, Building D
Reno, Nevada 89512
(775) 328-2231



1 inch = 100 feet



created by: CFB 10/24/2012

updated: KSB 07/01/14 SR 11/15/18

SR 01/25/23

area previously shown on map(s):

NOTE: This map was prepared for the use of the Washoe County Assessor for assessment and illustrative purposes only. It does not represent a survey of the premises. No liability is assumed as to the sufficiency or accuracy of the data delineated hereon.

(#5293)
BAILEY CREEK ESTATES

PORTION OF SW¼ SECTION 27
T18N - R20E

