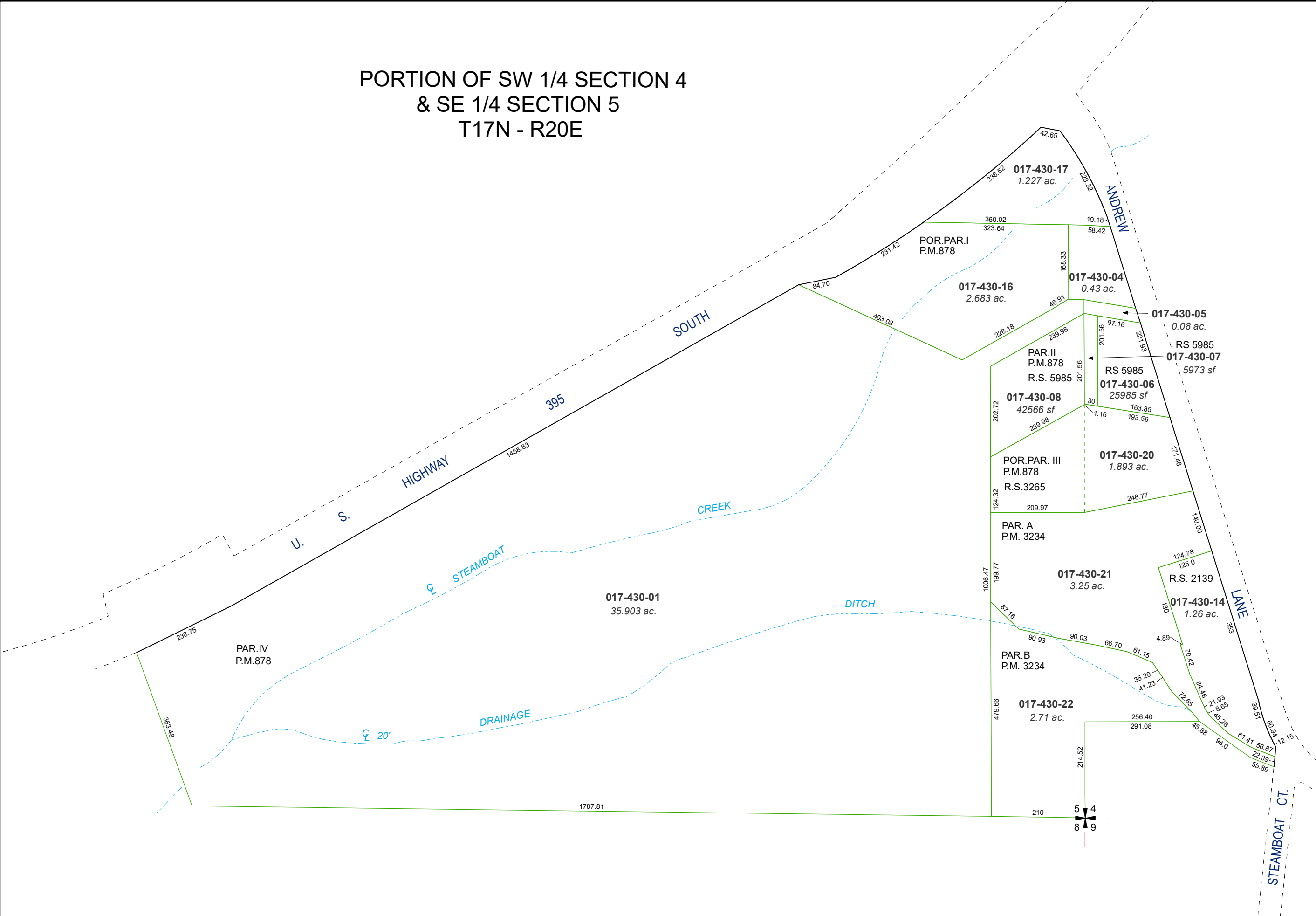


PORTION OF SW 1/4 SECTION 4  
& SE 1/4 SECTION 5  
T17N - R20E

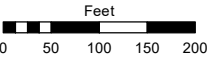


Assessor's Map Number

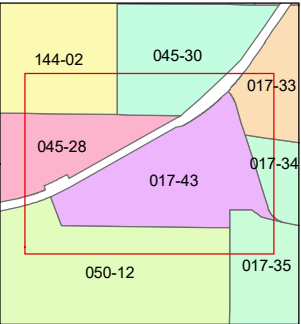
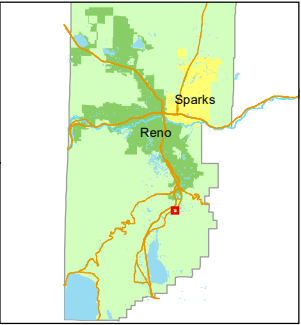
017-43

STATE OF NEVADA  
**WASHOE COUNTY**  
**ASSESSOR'S OFFICE**

1001 East Ninth Street, Building D  
Reno, Nevada 89512  
(775) 328-2231



1 inch = 200 feet



created by: CFB 1/3/2011

updated: JKF 9/29/22

area previously shown on map(s):

NOTE: This map was prepared for the use of the Washoe County Assessor for assessment and illustrative purposes only. It does not represent a survey of the premises. No liability is assumed as to the sufficiency or accuracy of the data delineated hereon.