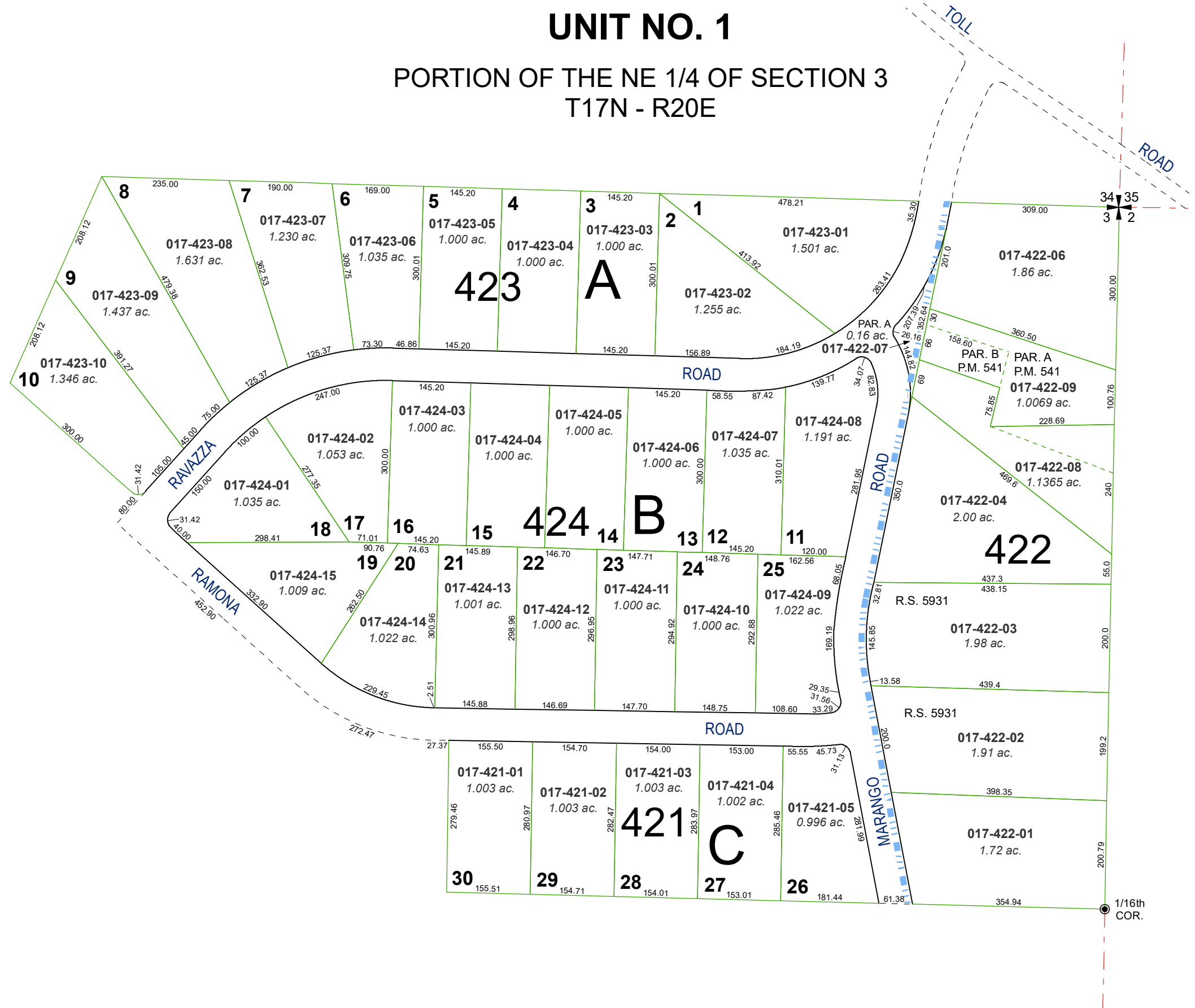


(#1701)
RAVAZZA RANCH SUBDIVISION
UNIT NO. 1

PORTION OF THE NE 1/4 OF SECTION 3
T17N - R20E



Assessor's Map Number

017-42

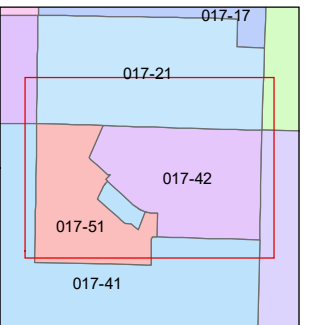
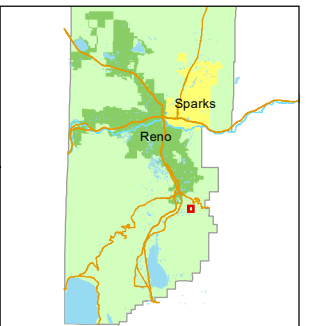
STATE OF NEVADA
WASHOE COUNTY
ASSESSOR'S OFFICE

1001 East Ninth Street, Building D
Reno, Nevada 89512
(775) 328-2231



Feet
0 50 100 150 200

1 inch = 200 feet



created by: TWT 7/10/2014

updated: JKF 9/29/22

area previously shown on map(s):

NOTE: This map was prepared for the use of the Washoe County Assessor for assessment and illustrative purposes only. It does not represent a survey of the premises. No liability is assumed as to the sufficiency or accuracy of the data delineated hereon.