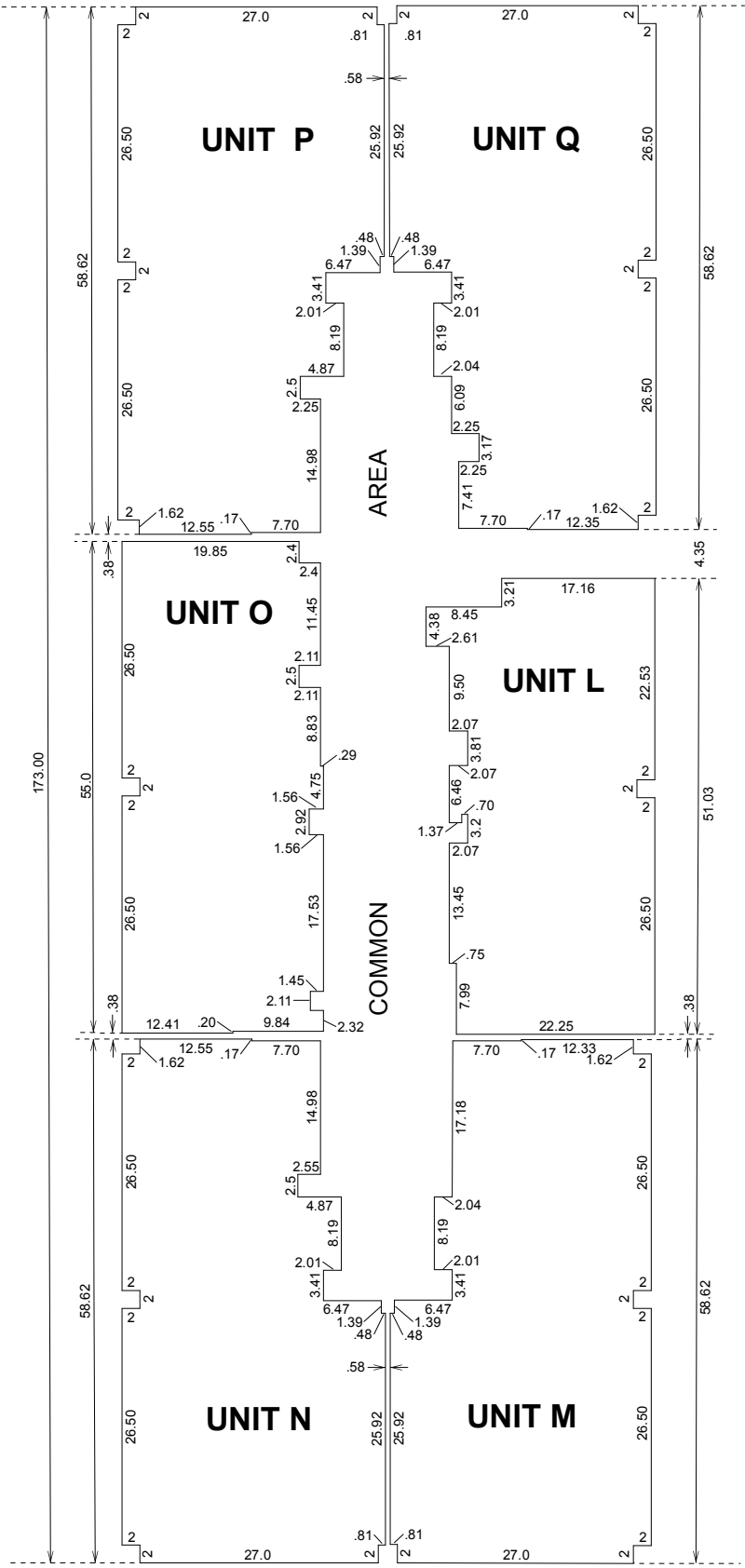
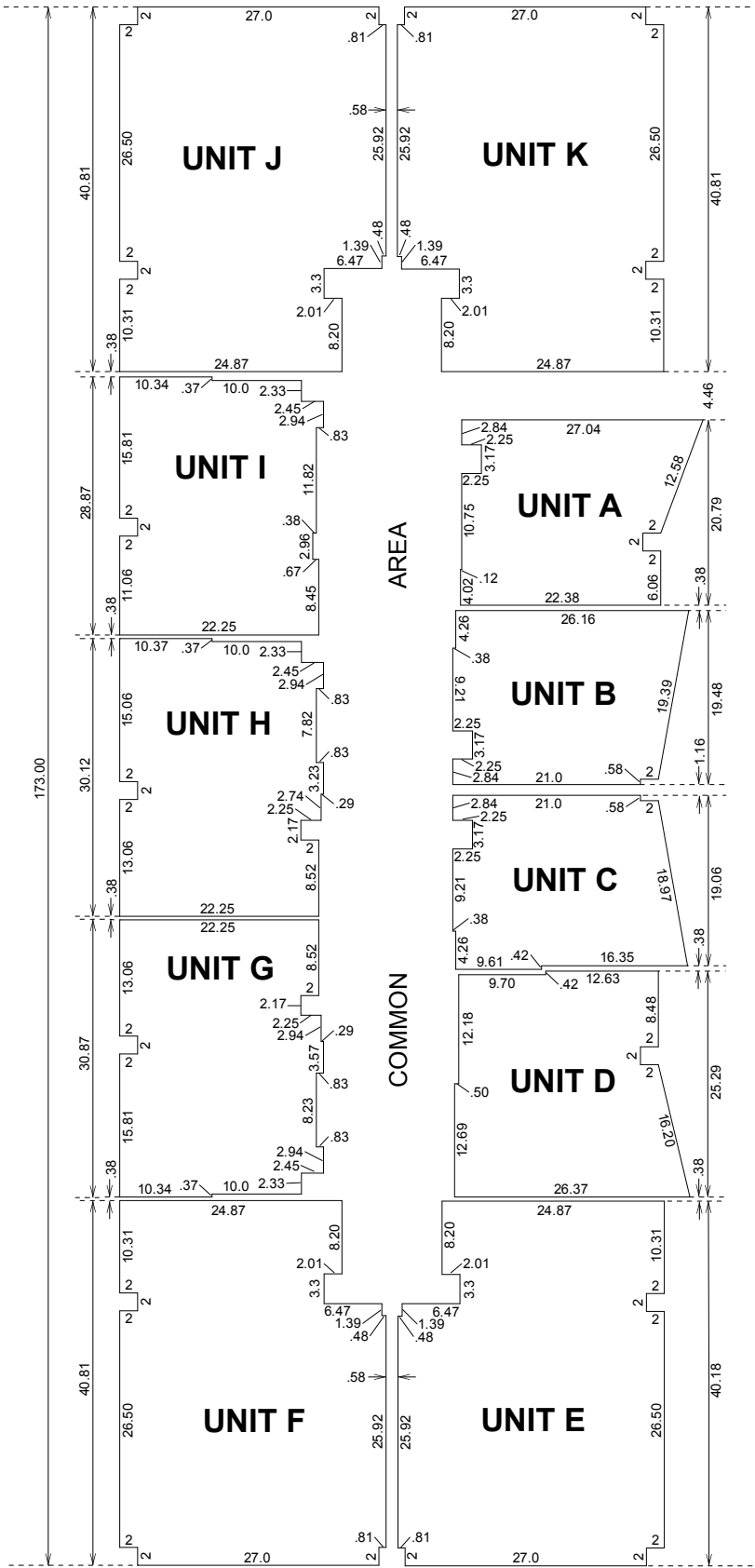
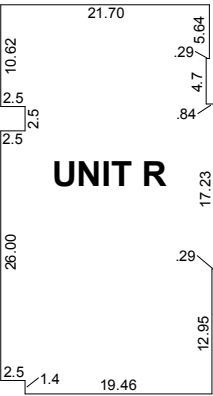
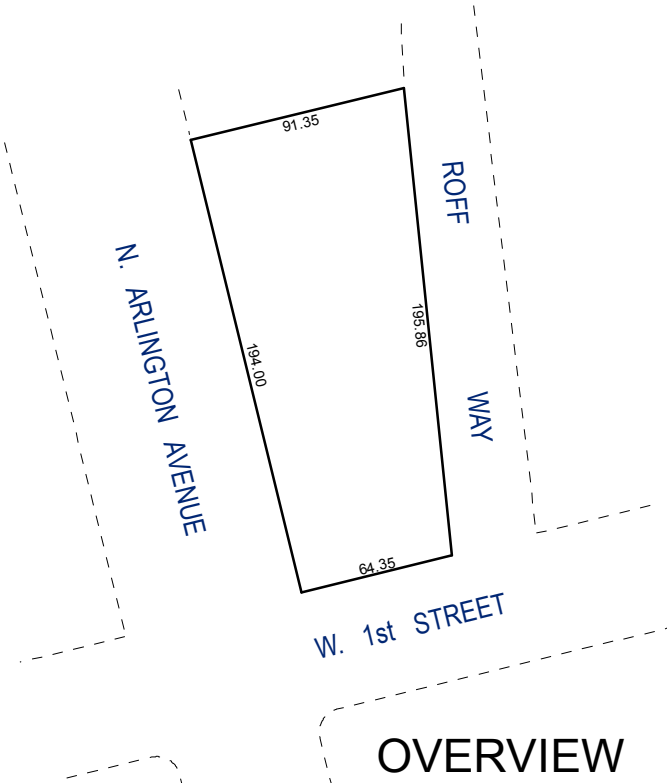


TYPICAL UNITS



(#1915)  
**ARLINGTON TOWERS**  
A CONDOMINIUM SUBDIVISION  
OF AN EXISTING BUILDING

UNDIV. 1/194 INT.COMMON AREA  
UNDIV. 1/195 INT. REAL PROPERTY

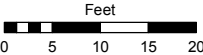


Assessor's Map Number

**011-63-S5**

STATE OF NEVADA  
**WASHOE COUNTY**  
**ASSESSOR'S OFFICE**  
Joshua G. Wilson, Assessor

1001 East Ninth Street  
Building D  
Reno, Nevada 89512  
(775) 328-2231



1 inch = 20 feet



created by: NLH 5/16/2011

last updated: NLH 7/22/11

area previously shown on map(s)

NOTE: This map was prepared for the use of the Washoe County Assessor for assessment and illustrative purposes only. It does not represent a survey of the premises. No liability is assumed as to the sufficiency or accuracy of the data delineated hereon.