

(#1915)
ARLINGTON TOWERS
A CONDOMINIUM SUBDIVISION
OF AN EXISTING BUILDING
A POR. OF THE S ½ OF SEC. 11
T19N - R19E
22nd FLOOR

- NOTES:
- SEE PAGE 011-63-S5 FOR UNIT DETAILS AND OVERVIEW
 - C.A. = COMMON AREA
 - COMMON AREA PARCEL IS COMBINED FOR ALL FLOORS AND CAN BE FOUND ON PAGE 011-61-S1
 - L.C.A. = LIMITED COMMON AREA

Assessor's Map Number

011-63-S2

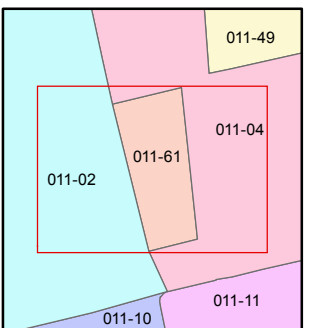
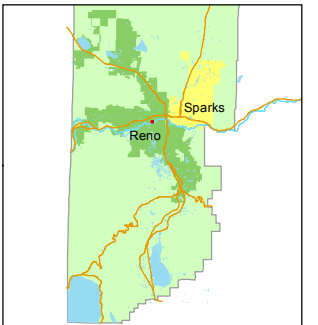
STATE OF NEVADA
WASHOE COUNTY
ASSESSOR'S OFFICE
Michael E. Clark, Assessor

1001 East Ninth Street
Building D
Reno, Nevada 89512
(775) 328-2231



Feet
0 5 10 15 20

1 inch = 20 feet



created by: NLH 5/16/2011

last updated: CFB 12/28/2015

area previously shown on map(s)

NOTE: This map was prepared for the use of the Washoe County Assessor for assessment and illustrative purposes only. It does not represent a survey of the premises. No liability is assumed as to the sufficiency or accuracy of the data delineated hereon.