

(#4896)  
**THE MONTAGE PHASE 4**  
A POR. OF THE N 1/2 OF SEC. 11,  
T19N - R19E

**FLOOR 6 - SOUTH  
RESIDENTIAL UNITS**

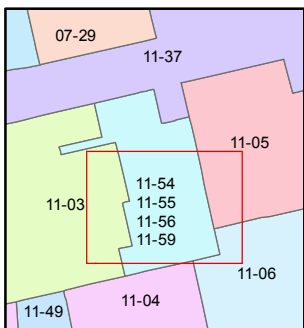
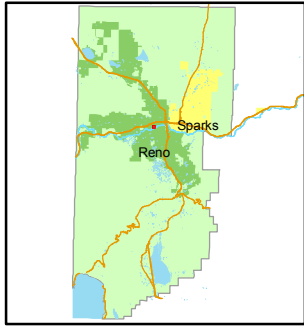
NOTES  
L.C.E. = LIMITED COMMON ELEMENT  
UNITS ARE 3 FLOORS  
SEE PAGE 011-59-S1 FOR FIRST FLOOR DETAILS  
AND TOTAL SQUARE FOOTAGE  
SEE PAGE 011-59-S3 FOR SECOND FLOOR DETAILS

Assessor's Map Number  
**011-59-S5**

STATE OF NEVADA  
**WASHOE COUNTY**  
**ASSESSOR'S OFFICE**  
Joshua G. Wilson, Assessor  
1001 East Ninth Street  
Building D  
Reno, Nevada 89512  
(775) 328-2231



Feet  
0 3.75 7.5 15 22.5 30  
1 inch = 30 feet



created by: NLH 9/11/2009  
last updated: \_\_\_\_\_

area previously shown on map(s)  
011-54-S9

NOTE: This map was prepared for the use of the Washoe County Assessor for assessment and illustrative purposes only. It does not represent a survey of the premises. No liability is assumed as to the sufficiency or accuracy of the data delineated hereon.