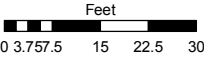
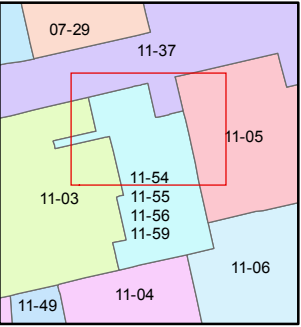
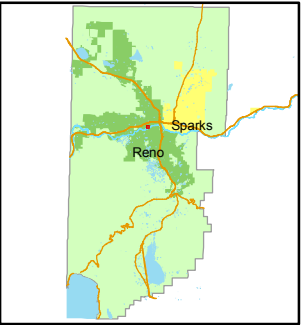


STATE OF NEVADA  
**WASHOE COUNTY**  
**ASSESSOR'S OFFICE**  
Joshua G. Wilson, Assessor

1001 East Ninth Street  
Building D  
Reno, Nevada 89512  
(775) 328-2231



1 inch = 30 feet



created by: NLH 9/11/2009

last updated: \_\_\_\_\_

area previously shown on map(s)

011-03

NOTE: This map was prepared for the use of the Washoe County Assessor for assessment and illustrative purposes only. It does not represent a survey of the premises. No liability is assumed as to the sufficiency or accuracy of the data delineated hereon.

**(#4896)**  
**THE MONTAGE PHASE 4**

A POR. OF THE N 1/2 OF SEC. 11,  
T19N - R19E

**FLOOR 24  
RESIDENTIAL UNITS**

C.E. = COMMON ELEMENT  
UNITS ARE 2 FLOORS  
SEE PAGE 011-56-S5 FOR FIRST FLOOR DETAILS  
AND TOTAL SQUARE FOOTAGE

