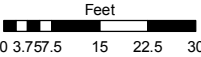
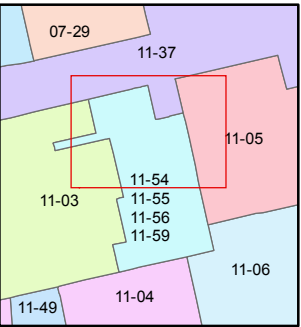
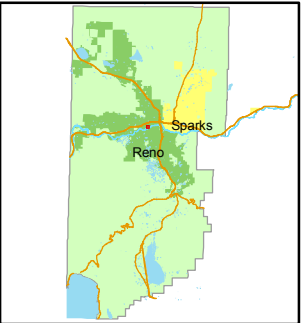


STATE OF NEVADA
WASHOE COUNTY
ASSESSOR'S OFFICE
Joshua G. Wilson, Assessor

1001 East Ninth Street
Building D
Reno, Nevada 89512
(775) 328-2231



1 inch = 30 feet



created by: NLH 9/11/2009

last updated: _____

area previously shown on map(s)

011-03

NOTE: This map was prepared for the use of the Washoe County Assessor for assessment and illustrative purposes only. It does not represent a survey of the premises. No liability is assumed as to the sufficiency or accuracy of the data delineated hereon.

(#4869)

THE MONTAGE PHASE 2

A POR. OF THE N 1/2 OF SEC. 11,
T19N - R19E

FLOOR 17 RESIDENTIAL UNITS

C.E. = COMMON ELEMENT
L.C.E. = LIMITED COMMON ELEMENT
C.E. COMBINED AREA PARCEL FOR THIS FLOOR: 5515 sf TOTAL

