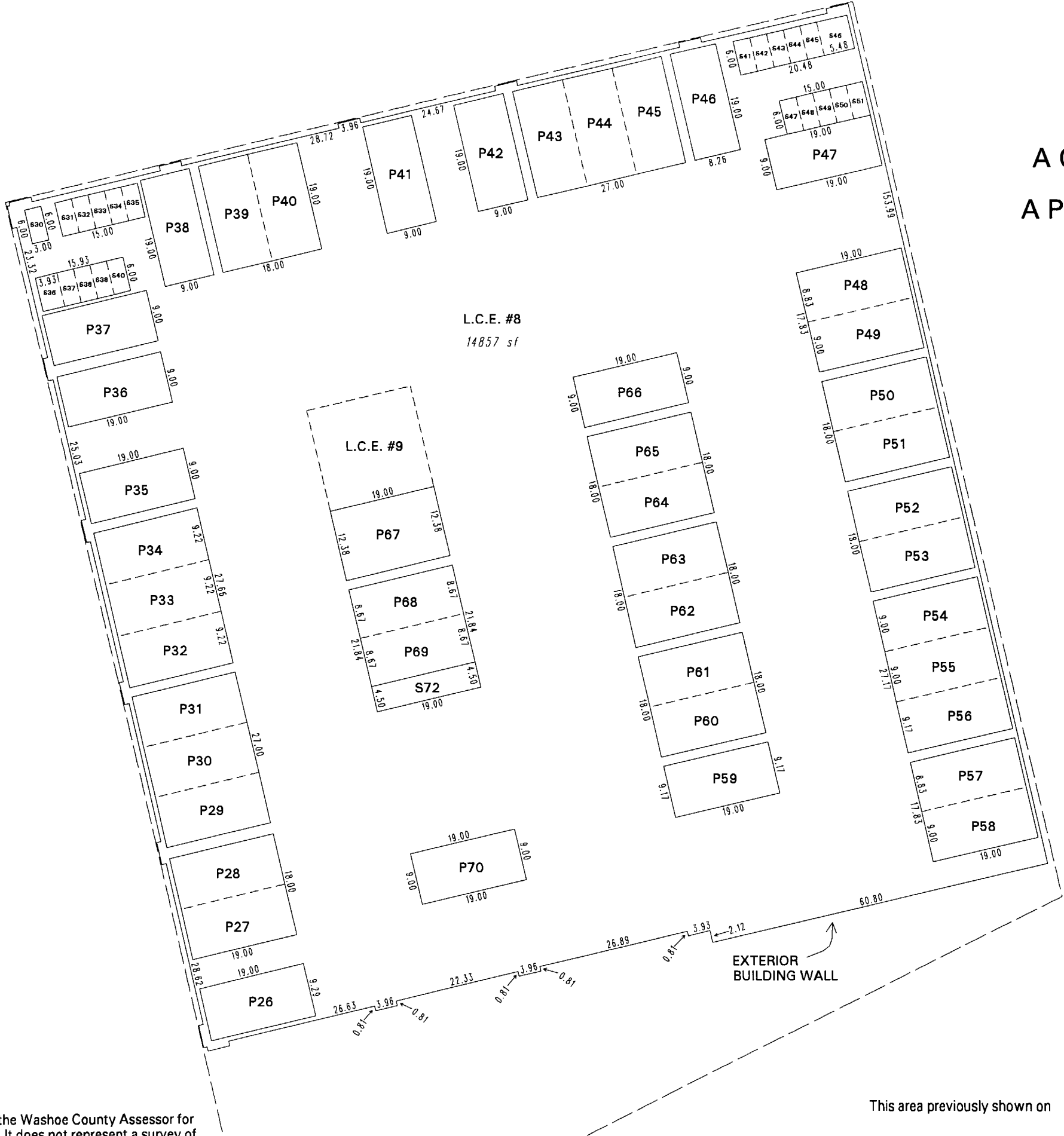
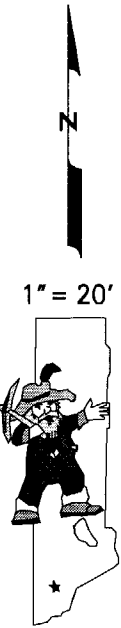


(#4789)
THE PALLADIO
A CONDOMINIUM SUBDIVISION
A POR. OF THE SE 1/4 OF SEC. 11
T19N - R19E



NOTES:
P# = R.L.C.E. PARKING SPACES
S# = R.L.C.E. STORAGE UNITS
L.C.E. = LIMITED COMMON ELEMENT
R.L.C.E. = RESIDENTIAL LIMITED COMMON ELEMENT
SEE PG. 011-52-S1 FOR THE
COMBINED COMMON ELEMENT
PARCELS FOR ALL FLOORS

**FLOOR 3
PARKING & STORAGE**
L.C.E.: 14857 sf
R.L.C.E.: 8254 sf
TOTAL: 23111 sf



NOTE: This map is prepared for the use of the Washoe County Assessor for assessment and illustrative purposes only. It does not represent a survey of the premises. No liability is assumed as to the sufficiency or the accuracy of the data delineated hereon.

Office of Washoe County Assessor, Nevada - Joshua G. Wilson

This area previously shown on 011-11

NOTE: Areas of parcels which are less than 2 acres are shown in square feet.

Drawn by	NLH 06/15/07
Revised	