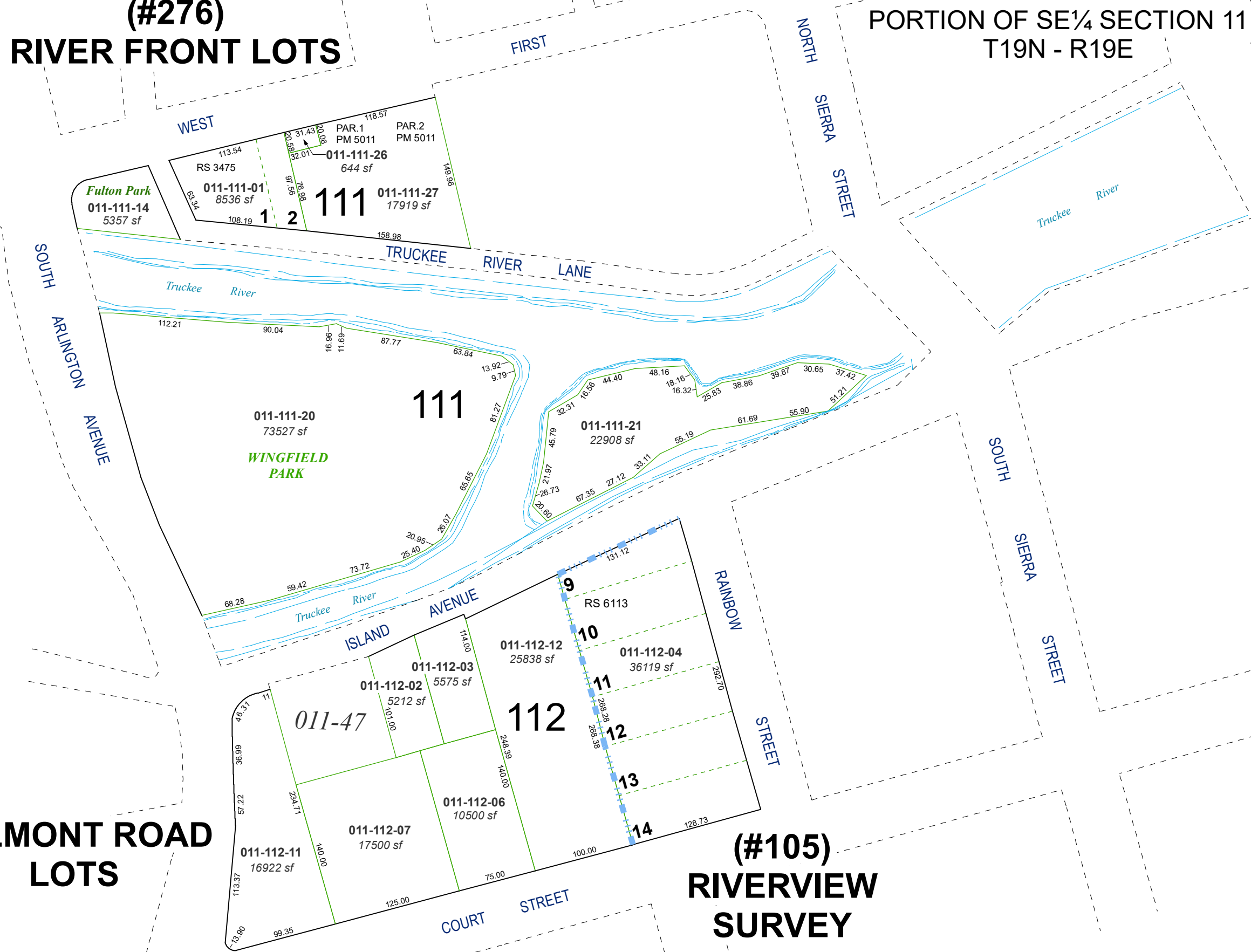


(#276)
RIVER FRONT LOTS

BELMONT ROAD
LOTS

(#105)
RIVERVIEW
SURVEY

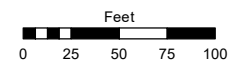


Assessor's Map Number

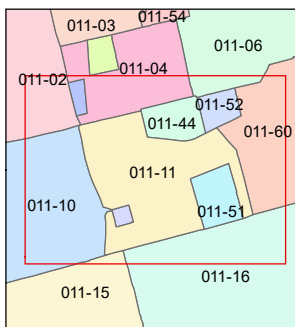
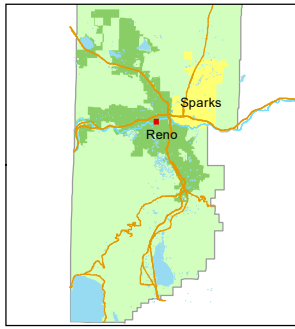
011-11

STATE OF NEVADA
WASHOE COUNTY
ASSESSOR'S OFFICE

1001 East Ninth Street, Building D
Reno, Nevada 89512
(775) 328-2231



1 inch = 100 feet



created by: CFB 03/05/2010

updated: SR 09/20/21

area previously shown on map(s):

NOTE: This map was prepared for the use of the Washoe County Assessor for assessment and illustrative purposes only. It does not represent a survey of the premises. No liability is assumed as to the sufficiency or accuracy of the data delineated hereon.