

Assessor's Map Number

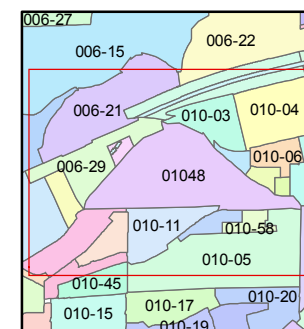
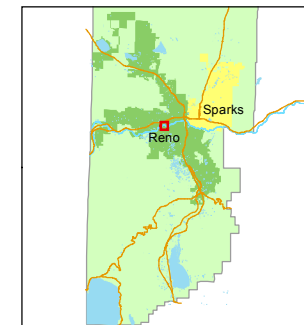
010-48

STATE OF NEVADA
WASHOE COUNTY
ASSESSOR'S OFFICE
Michael E. Clark, Assessor

1001 East Ninth Street
Building D
Reno, Nevada 89512
(775) 328-2231



1 inch = 300 feet



created by: CFB 06/15/2015

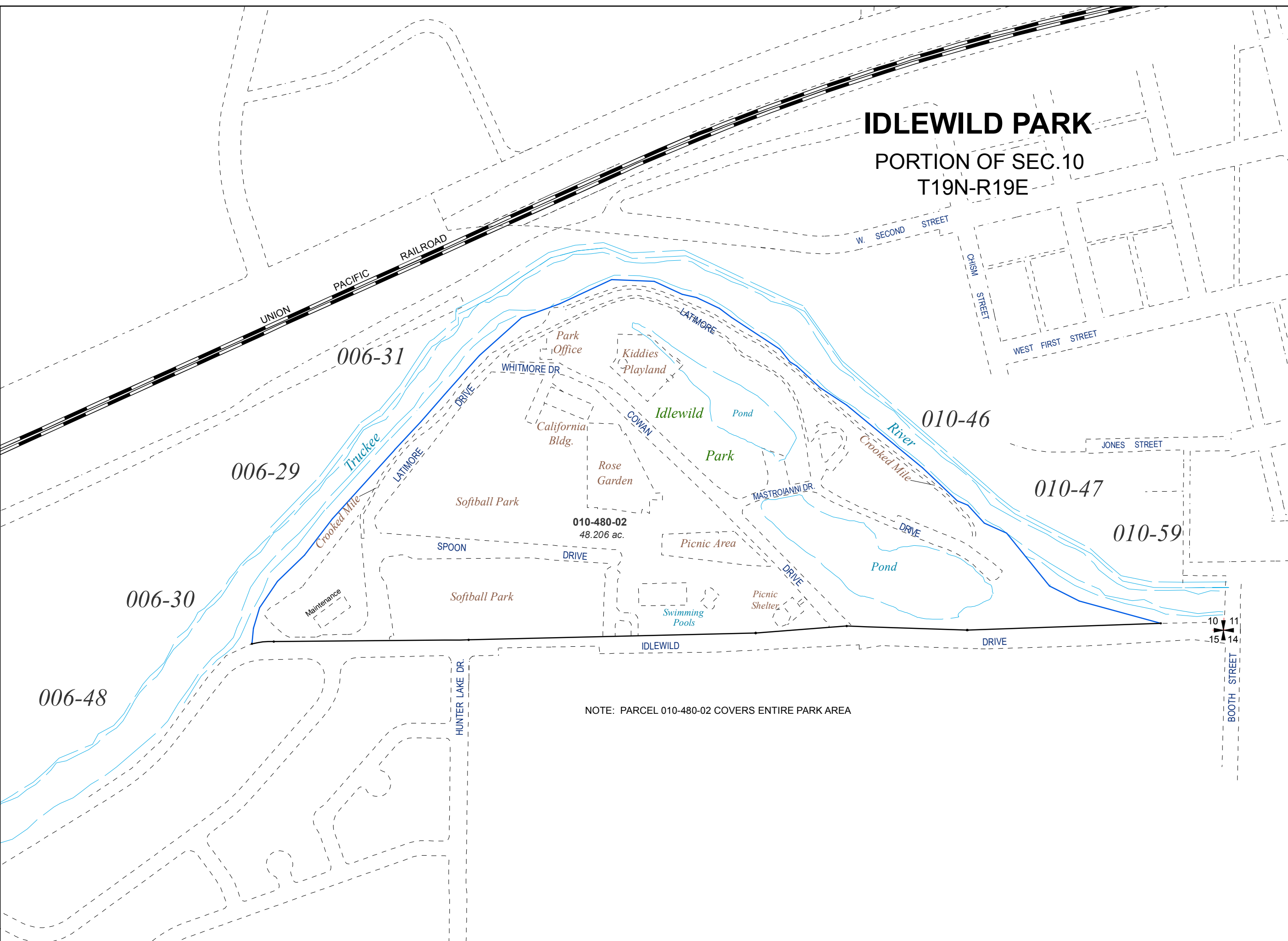
last updated: _____

area previously shown on map(s)

NOTE: This map was prepared for the use of the Washoe County Assessor for assessment and illustrative purposes only. It does not represent a survey of the premises. No liability is assumed as to the sufficiency or accuracy of the data delineated hereon.

IDLEWILD PARK

PORTION OF SEC.10
T19N-R19E



NOTE: PARCEL 010-480-02 COVERS ENTIRE PARK AREA