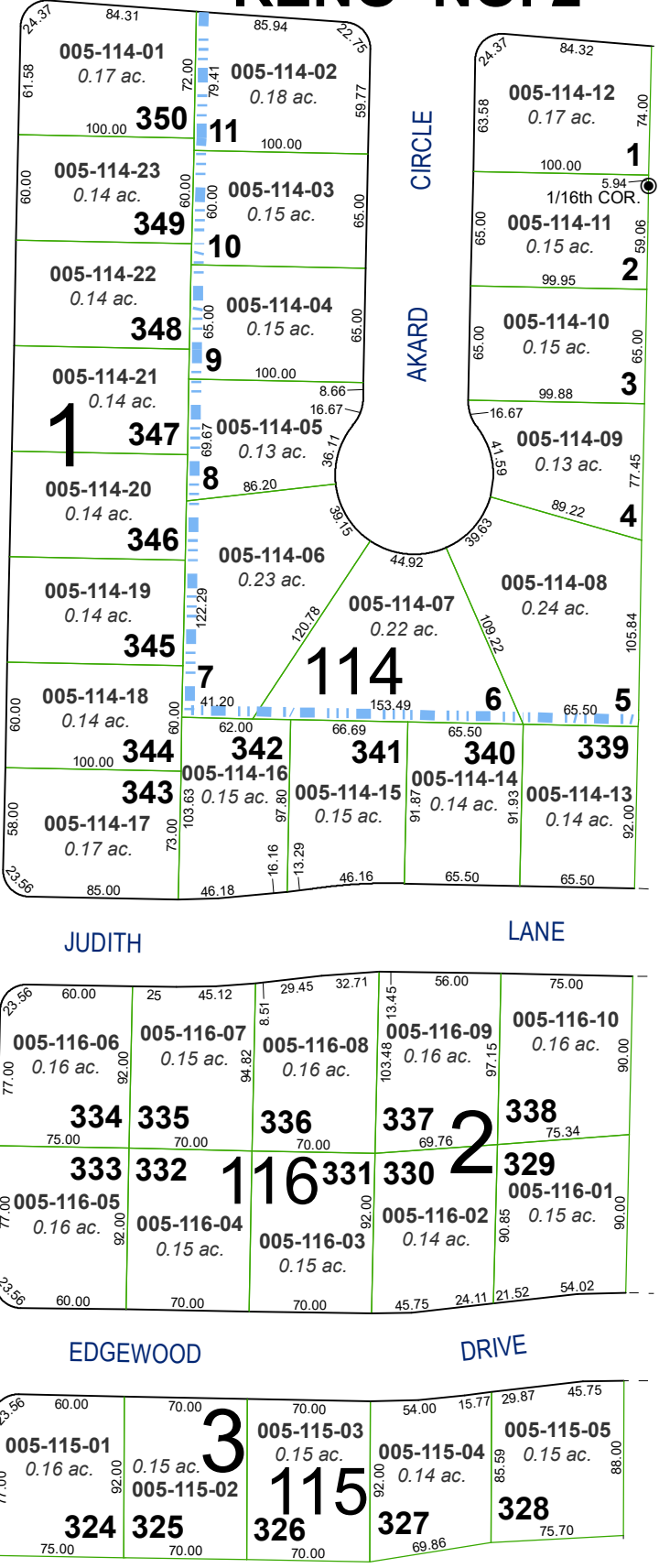
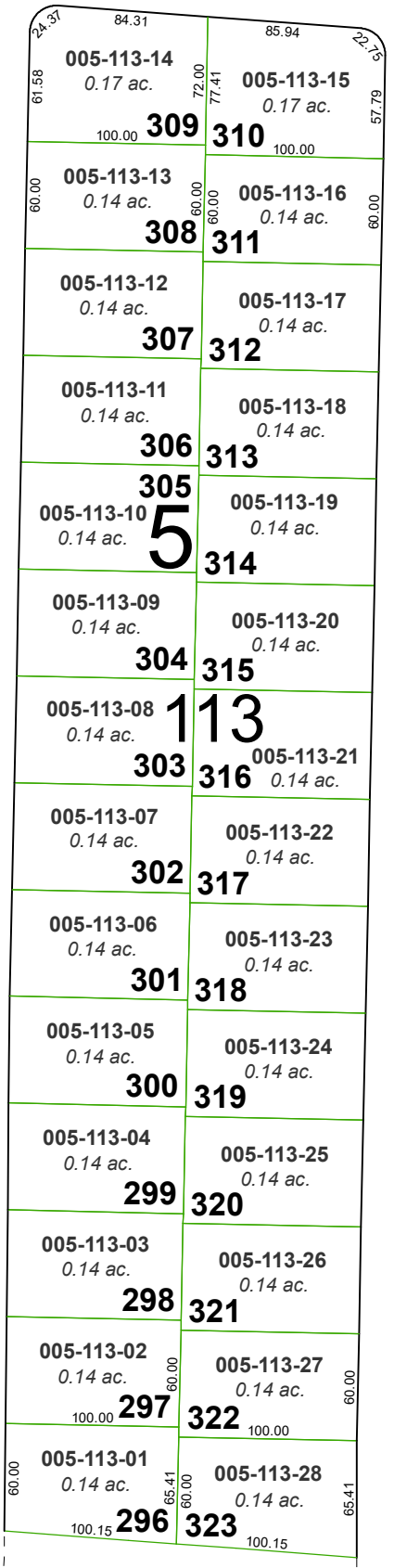
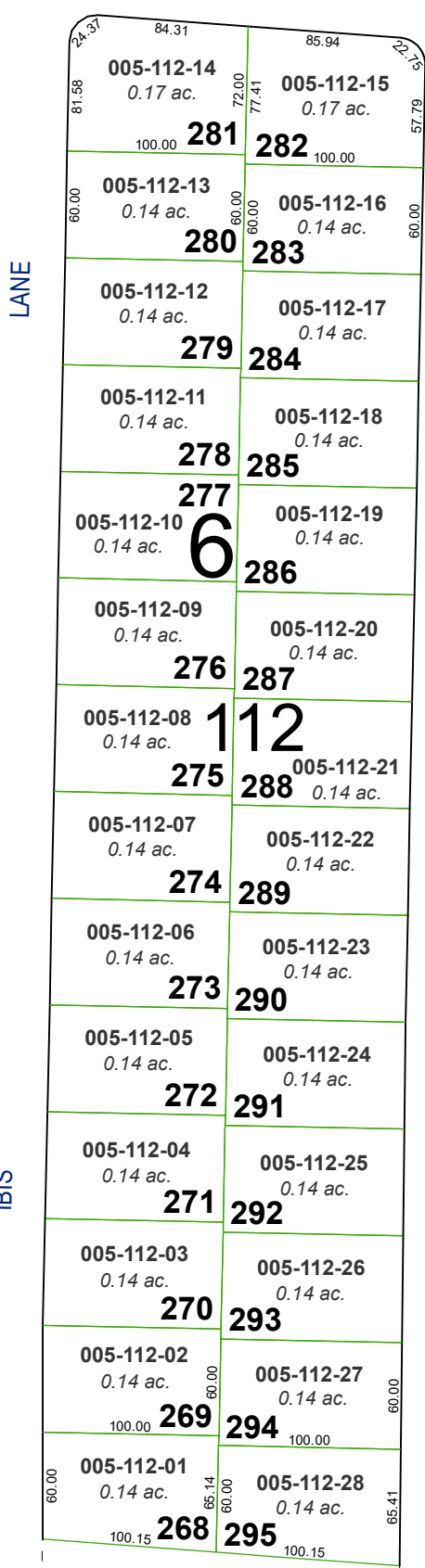
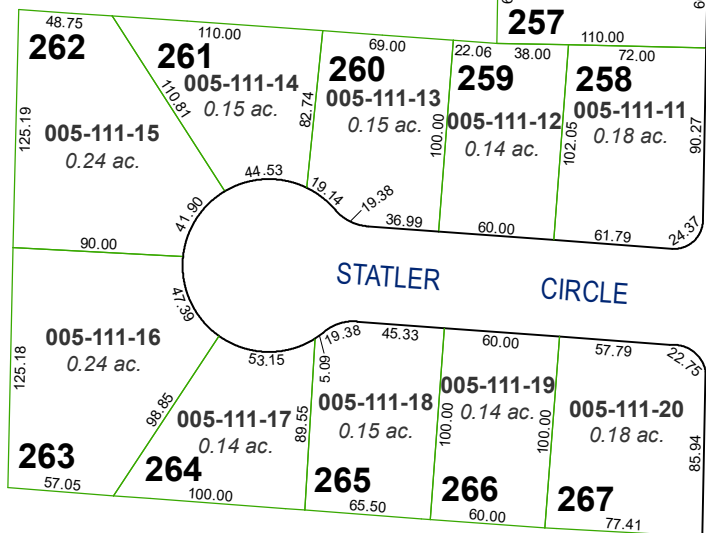


(#831)  
**SIERRA HEIGHTS  
RENO NO. 2-B**

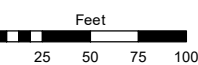
POR. OF THE  
NE 1/4 OF SEC. 9  
T19N - R19E



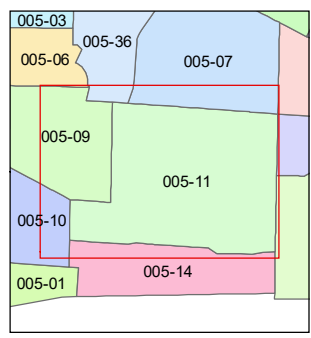
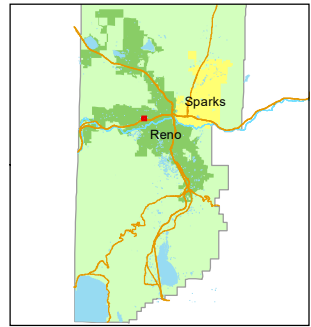
Assessor's Map Number

**005-11**

STATE OF NEVADA  
**WASHOE COUNTY**  
**ASSESSOR'S OFFICE**  
1001 East Ninth Street, Building D  
Reno, Nevada 89512  
(775) 328-2231



1 inch = 100 feet



created by: TWT 07/13/2012

updated: SR 11/13/20

area previously shown on map(s):

NOTE: This map was prepared for the use of the Washoe County Assessor for assessment and illustrative purposes only. It does not represent a survey of the premises. No liability is assumed as to the sufficiency or accuracy of the data delineated hereon.