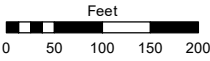
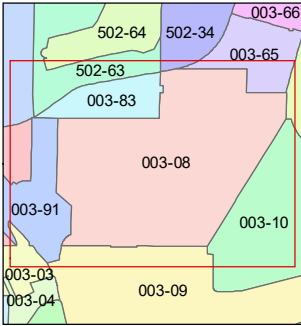
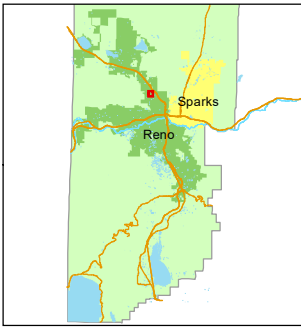


STATE OF NEVADA
WASHOE COUNTY
ASSESSOR'S OFFICE

1001 East Ninth Street, Building D
Reno, Nevada 89512
(775) 328-2231



1 inch = 200 feet



created by: TWT 4/26/2012

updated: JKF 4/16/18 KSB 4/02/21

JRA 7/23/21 JRA 10/31/22 KSB 5/2/24

area previously shown on map(s):

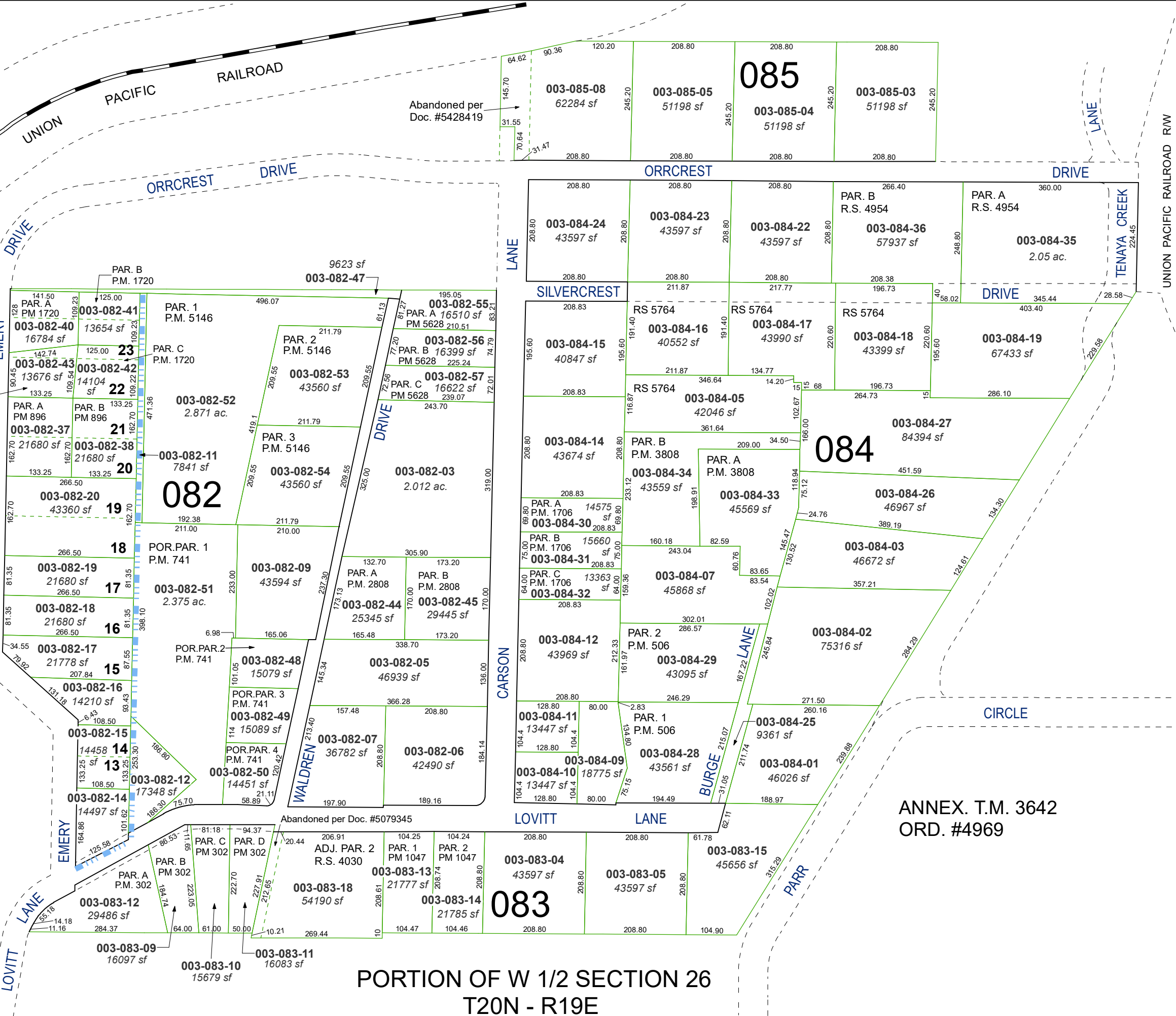
082-41

NOTE: This map was prepared for the use of the Washoe County Assessor for assessment and illustrative purposes only. It does not represent a survey of the premises. No liability is assumed as to the sufficiency or accuracy of the data delineated hereon.

**RECORD OF
SURVEY 238**

WALT STREET

NORTH VIRGINIA STREET



**PORTION OF W 1/2 SECTION 26
T20N - R19E**

ANNEX. T.M. 3642
ORD. #4969