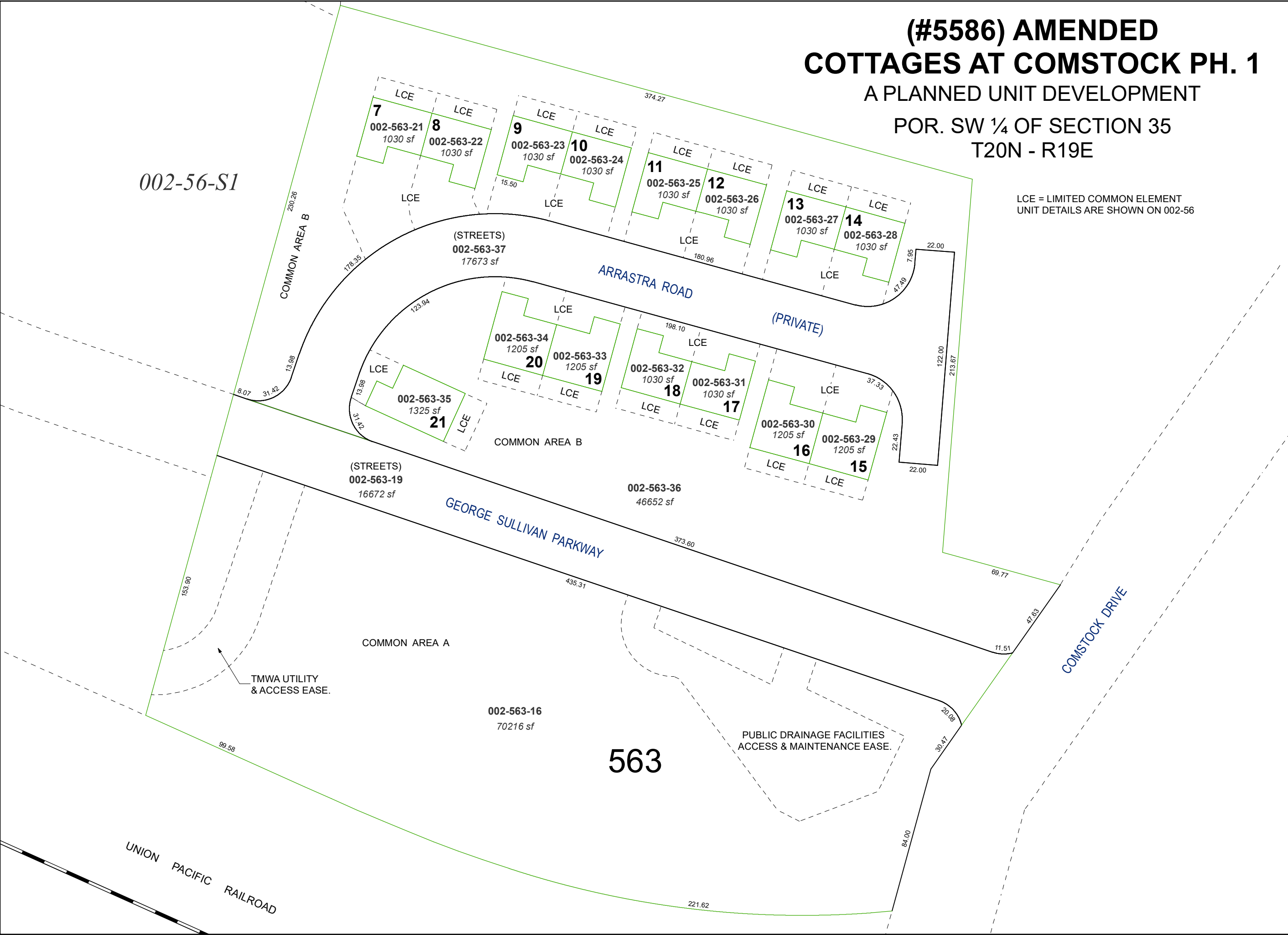


(#5586) AMENDED  
COTTAGES AT COMSTOCK PH. 1  
A PLANNED UNIT DEVELOPMENT  
POR. SW ¼ OF SECTION 35  
T20N - R19E

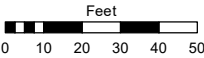
002-56-S1



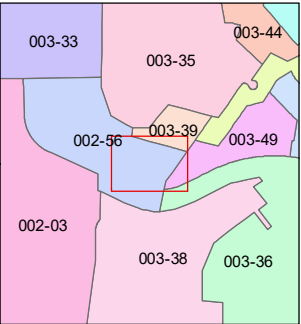
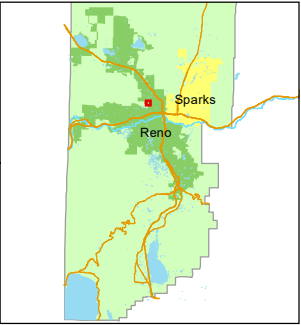
LCE = LIMITED COMMON ELEMENT  
UNIT DETAILS ARE SHOWN ON 002-56

Assessor's Map Number  
**002-56-S3**

STATE OF NEVADA  
**WASHOE COUNTY**  
**ASSESSOR'S OFFICE**  
1001 East Ninth Street, Building D  
Reno, Nevada 89512  
(775) 328-2231



1 inch = 50 feet



created by: JRA 05/08/2024

updated: JRA 12/10/24

area previously shown on map(s):  
003-36

NOTE: This map was prepared for the use of the Washoe County Assessor for assessment and illustrative purposes only. It does not represent a survey of the premises. No liability is assumed as to the sufficiency or accuracy of the data delineated hereon.