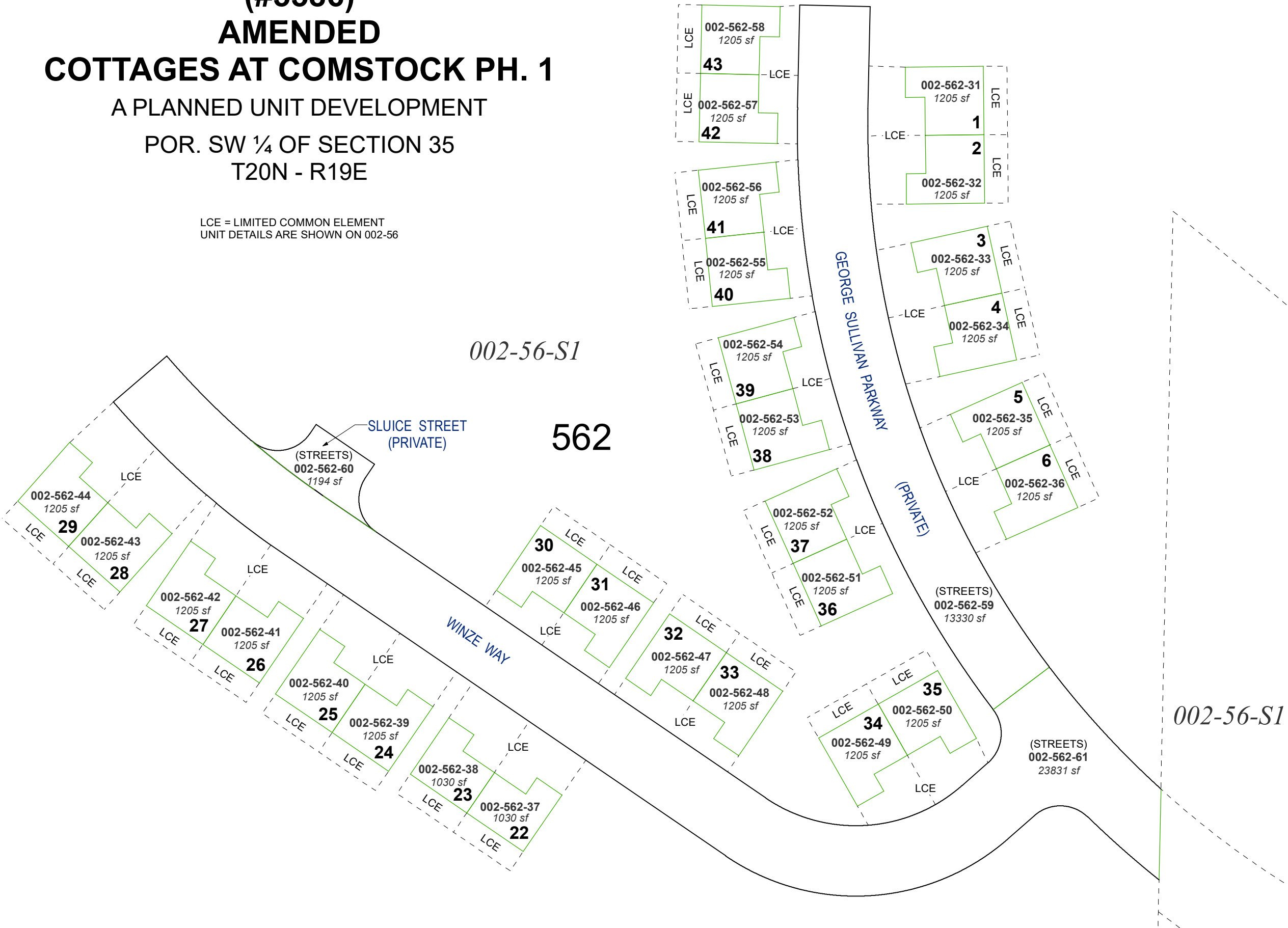


(#5586)
AMENDED
COTTAGES AT COMSTOCK PH. 1
A PLANNED UNIT DEVELOPMENT
POR. SW ¼ OF SECTION 35
T20N - R19E

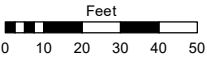
LCE = LIMITED COMMON ELEMENT
UNIT DETAILS ARE SHOWN ON 002-56



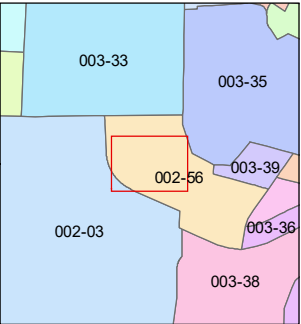
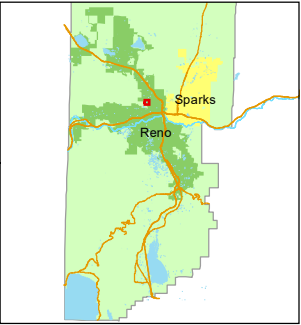
Assessor's Map Number

002-56-S2

STATE OF NEVADA
WASHOE COUNTY
ASSESSOR'S OFFICE
1001 East Ninth Street, Building D
Reno, Nevada 89512
(775) 328-2231



1 inch = 50 feet



created by: JRA 05/08/2024

updated: JRA 12/10/24

area previously shown on map(s):

002-03

NOTE: This map was prepared for the use of the Washoe County Assessor for assessment and illustrative purposes only. It does not represent a survey of the premises. No liability is assumed as to the sufficiency or accuracy of the data delineated hereon.