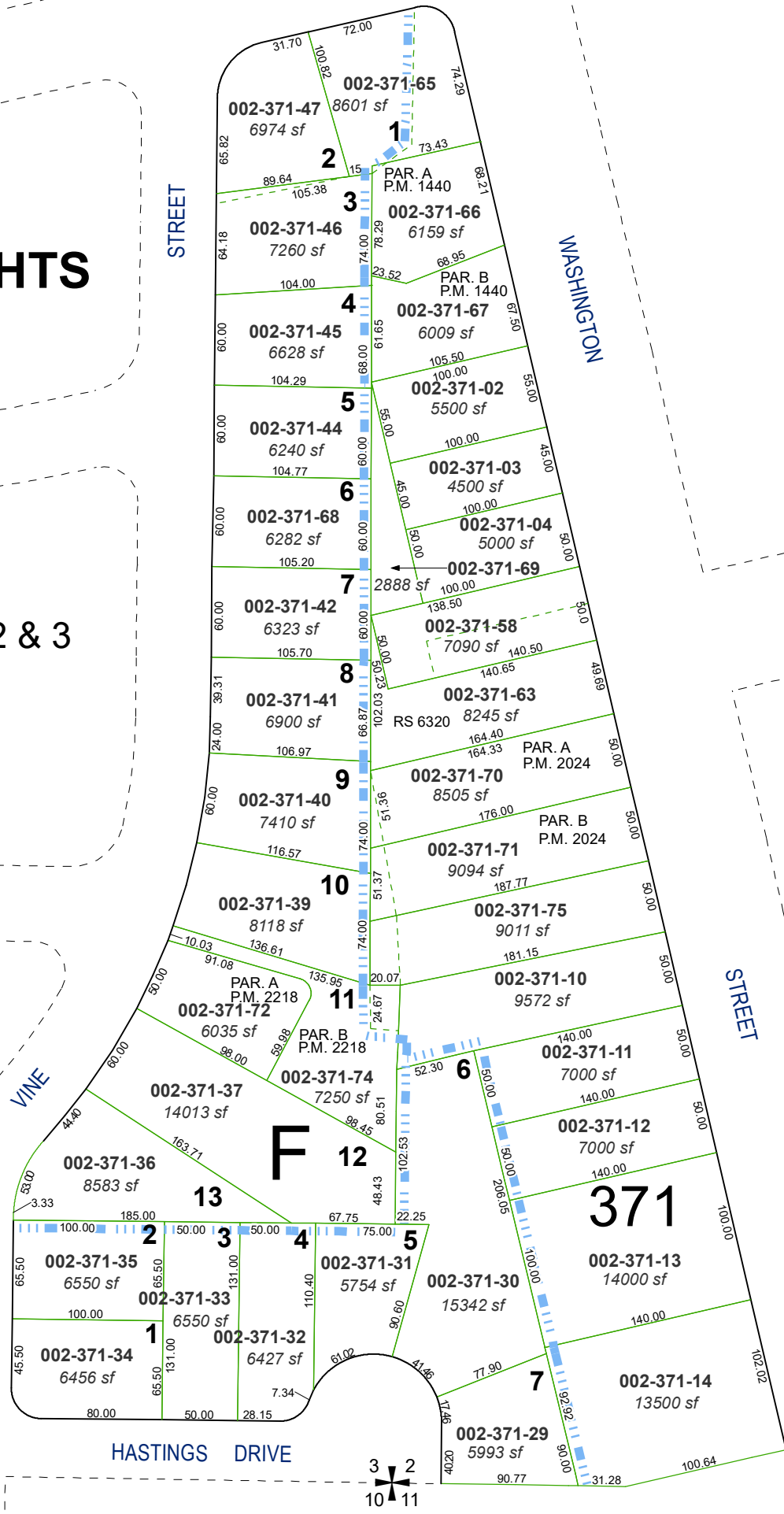


(#274 B)  
WASHINGTON HEIGHTS  
SUBDIVISION #1

PORTIONS OF SECTIONS 2 & 3  
T19N - R19E

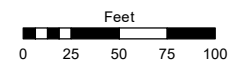
(#427)  
PRAY ADDITION



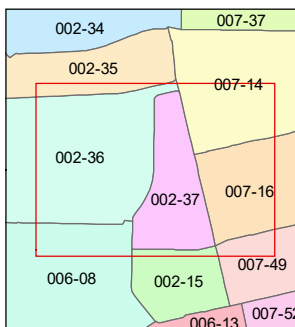
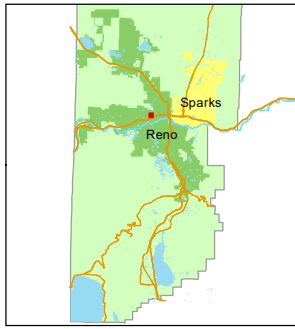
Assessor's Map Number

002-37

STATE OF NEVADA  
**WASHOE COUNTY**  
ASSESSOR'S OFFICE  
1001 East Ninth Street, Building D  
Reno, Nevada 89512  
(775) 328-2231



1 inch = 100 feet



created by: CFB 07/20/2012

updated: SR 12/30/21

area previously shown on map(s):

NOTE: This map was prepared for the use of the Washoe County Assessor for assessment and illustrative purposes only. It does not represent a survey of the premises. No liability is assumed as to the sufficiency or accuracy of the data delineated hereon.