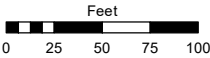
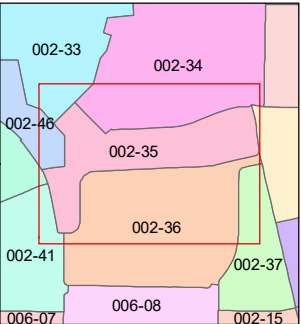
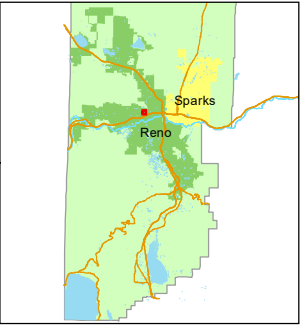


STATE OF NEVADA
WASHOE COUNTY
ASSESSOR'S OFFICE

1001 East Ninth Street, Building D
Reno, Nevada 89512
(775) 328-2231



1 inch = 100 feet



created by: TWT 04/04/2012

updated: SR 02/09/22

area previously shown on map(s):

NOTE: This map was prepared for the use of the Washoe County Assessor for assessment and illustrative purposes only. It does not represent a survey of the premises. No liability is assumed as to the sufficiency or accuracy of the data delineated hereon.

(#469)
AMPHITHEATER SUBDIVISION

PORTION OF SE¼ SECTION 3
T19N - R19E

(#274B)
**WASHINGTON HEIGHTS
SUBDIVISION NO.1**

