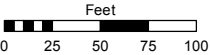
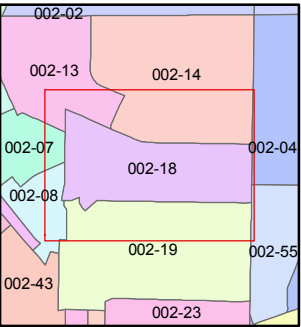
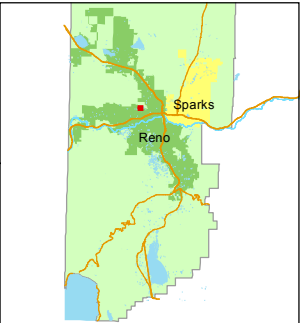


STATE OF NEVADA
WASHOE COUNTY
ASSESSOR'S OFFICE
Joshua G. Wilson, Assessor

1001 East Ninth Street
Building D
Reno, Nevada 89512
(775) 328-2231



1 inch = 100 feet



created by: TWT 3/26/2012

last updated:

area previously shown on map(s)

NOTE: This map was prepared for the use of the Washoe County Assessor for assessment and illustrative purposes only. It does not represent a survey of the premises. No liability is assumed as to the sufficiency or accuracy of the data delineated hereon.

(#509)
RENO HIGHLANDS SUBDIVISION NO. 2
UNIT NO. 1

PORTION OF NW 1/4 OF SECTION 3
T19N - R19E

ARCANE
AVENUE

AVENUE

DRIVE

GRIDLEY
AVENUE

COLEMAN
DRIVE

LASSEN
DRIVE

