

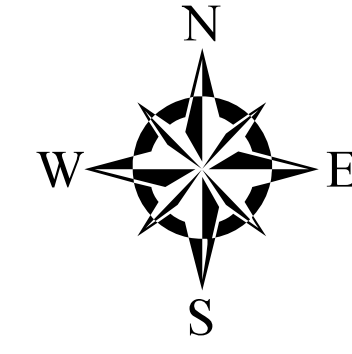
# INCLINE VILLAGE and CRYSTAL BAY

Lake Tahoe, Nevada

Southern Washoe County

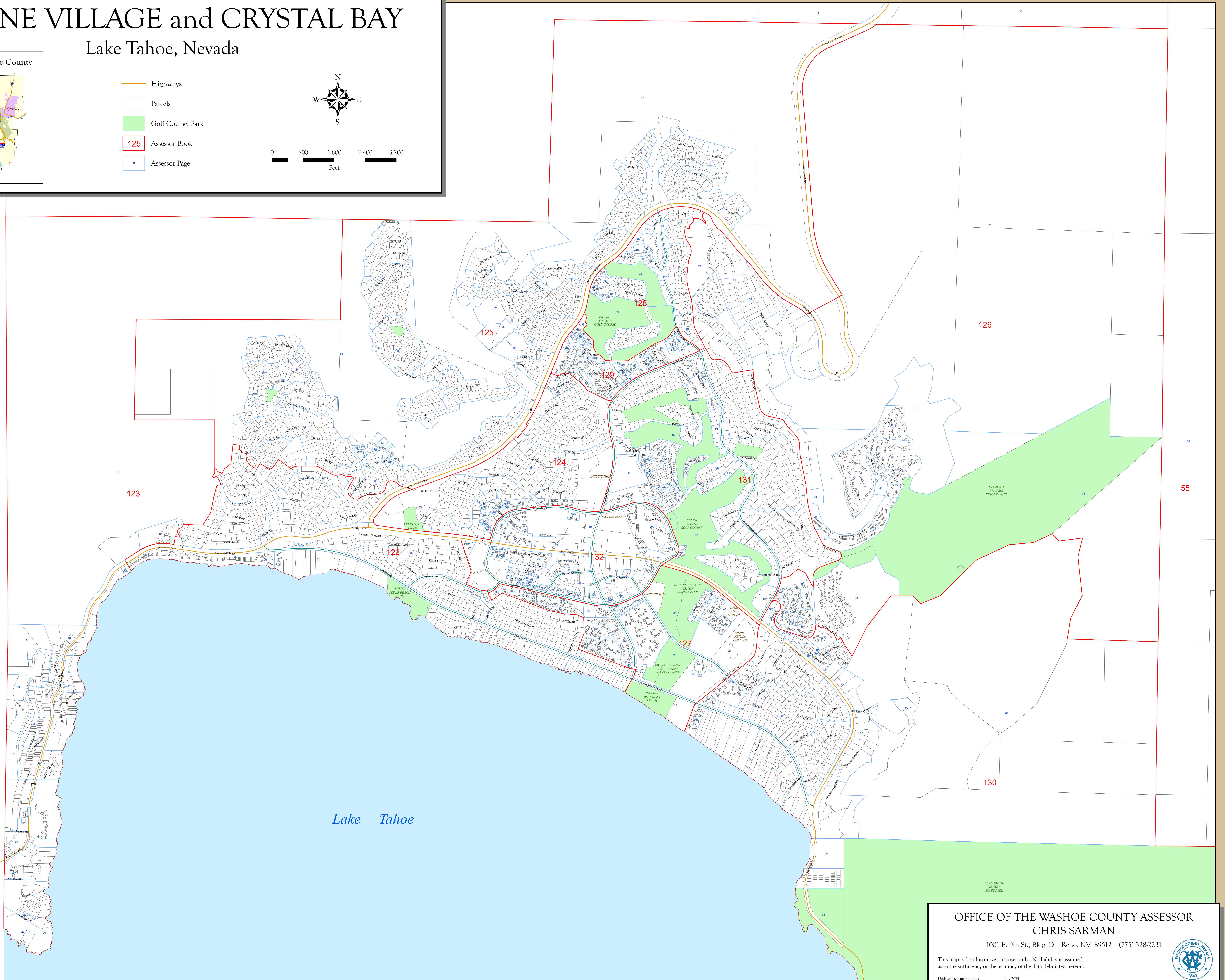


- Highways
- Parcels
- Golf Course, Park
- 125 Assessor Book
- 5 Assessor Page



0 800 1,600 2,400 3,200  
Feet

CALIFORNIA



OFFICE OF THE WASHOE COUNTY ASSESSOR  
CHRIS SARMAN  
1001 E. 9th St., Bldg. D Reno, NV 89512 (775) 328-2231

This map is for illustrative purposes only. No liability is assumed as to the sufficiency or the accuracy of the data delineated hereon.

Updated by Jean Franklin July 2024

