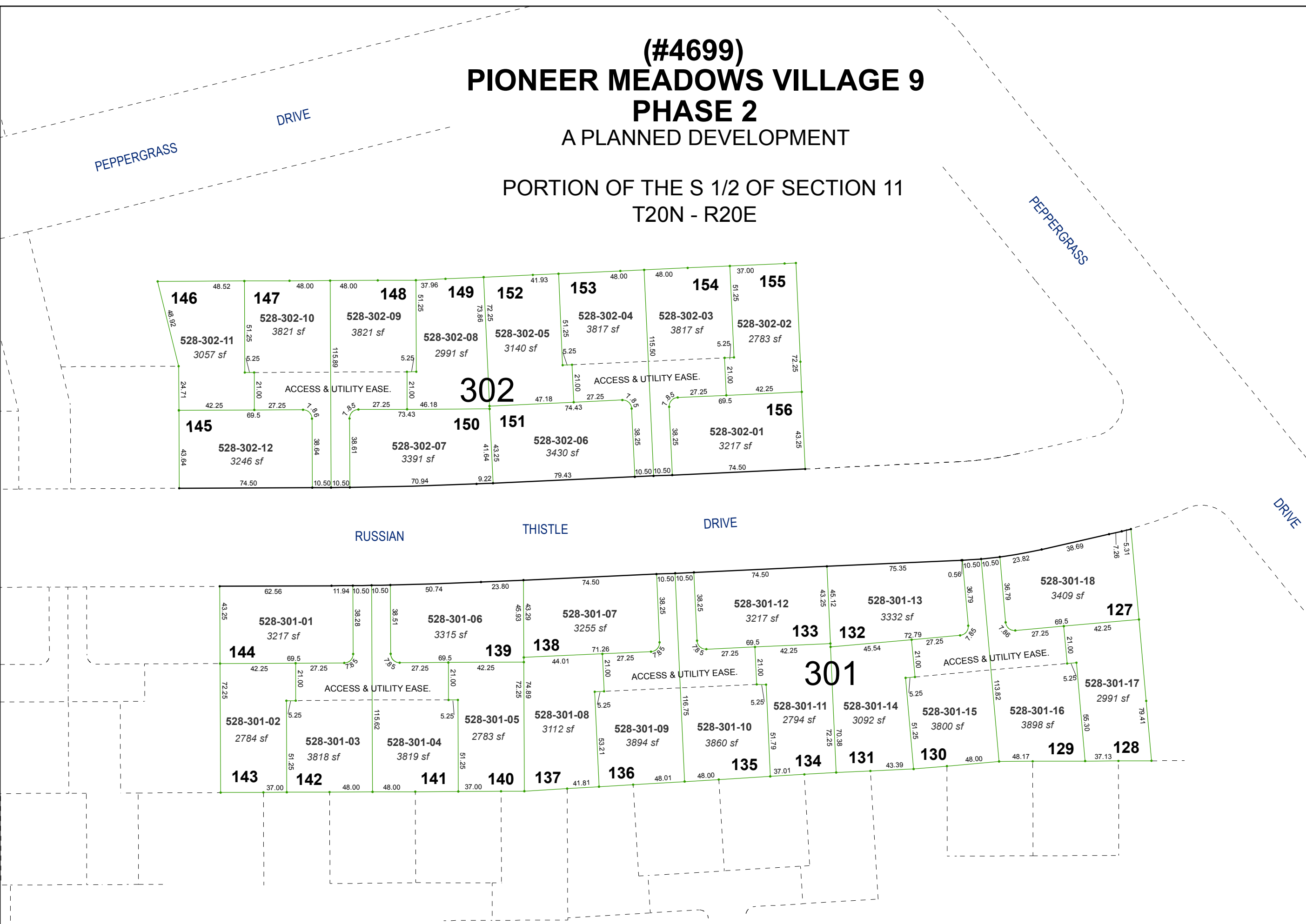


(#4699)
PIONEER MEADOWS VILLAGE 9
PHASE 2
 A PLANNED DEVELOPMENT

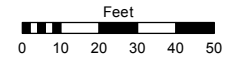
PORTION OF THE S 1/2 OF SECTION 11
 T20N - R20E



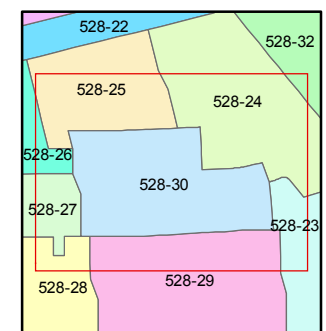
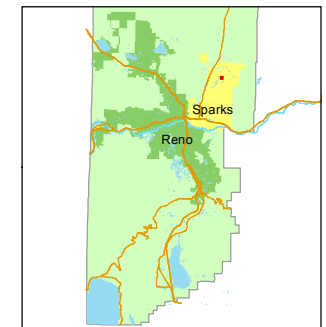
Assessor's Map Number
528-30

STATE OF NEVADA
WASHOE COUNTY
 ASSESSOR'S OFFICE
 Michael E. Clark, Assessor

1001 East Ninth Street
 Building D
 Reno, Nevada 89512
 (775) 328-2231



1 inch = 50 feet



created by: JKF 02/28/2017

last updated: _____

area previously shown on map(s)
528-22

NOTE: This map was prepared for the use of the Washoe County Assessor for assessment and illustrative purposes only. It does not represent a survey of the premises. No liability is assumed as to the sufficiency or accuracy of the data delineated hereon.