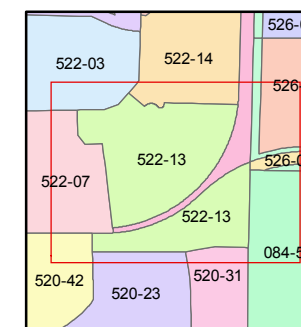
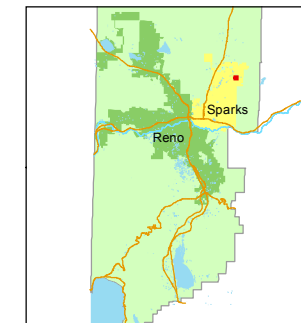




1 inch = 100 feet



created by: CFB 09/10/2013

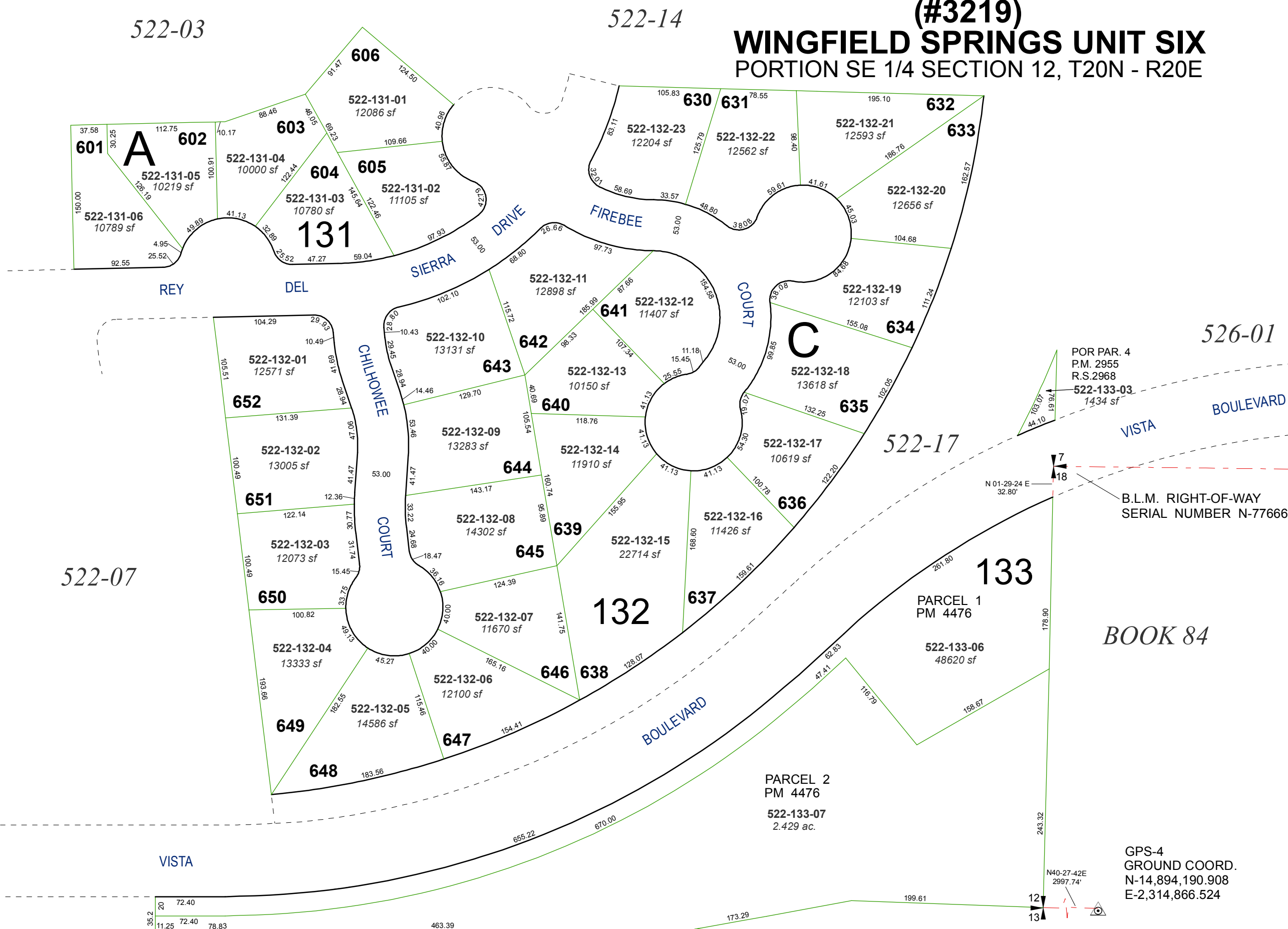
last updated:

area previously shown on map(s)

NOTE: This map was prepared for the use of the Washoe County Assessor for assessment and illustrative purposes only. It does not represent a survey of the premises. No liability is assumed as to the sufficiency or accuracy of the data delineated hereon.

(#3219) WINGFIELD SPRINGS UNIT SIX

PORTION SE 1/4 SECTION 12, T20N - R20E



20 72.40
11.25 72.40 78.83

BOOK 520

GPS-4
GROUND COORD.
N-14,894,190.908
E-2,314,866.524

PARCEL 1
PM 4476
522-133-06
48620 sf

PARCEL 2
PM 4476
522-133-07
2.429 ac.

B.L.M. RIGHT-OF-WAY
SERIAL NUMBER N-77666

N 01-29-24 E
32.80'

N40-27-42E
2997.74'