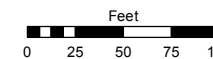


Assessor's Map Number

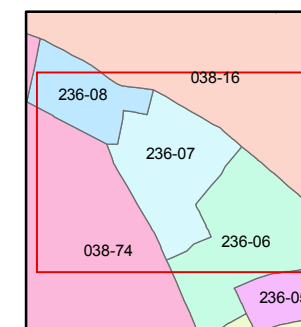
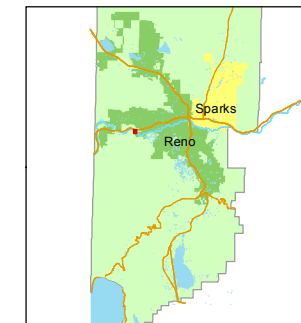
236-07

STATE OF NEVADA
WASHOE COUNTY
ASSESSOR'S OFFICE
Joshua G. Wilson, Assessor

1001 East Ninth Street
Building D
Reno, Nevada 89512
(775) 328-2231



1 inch = 100 feet



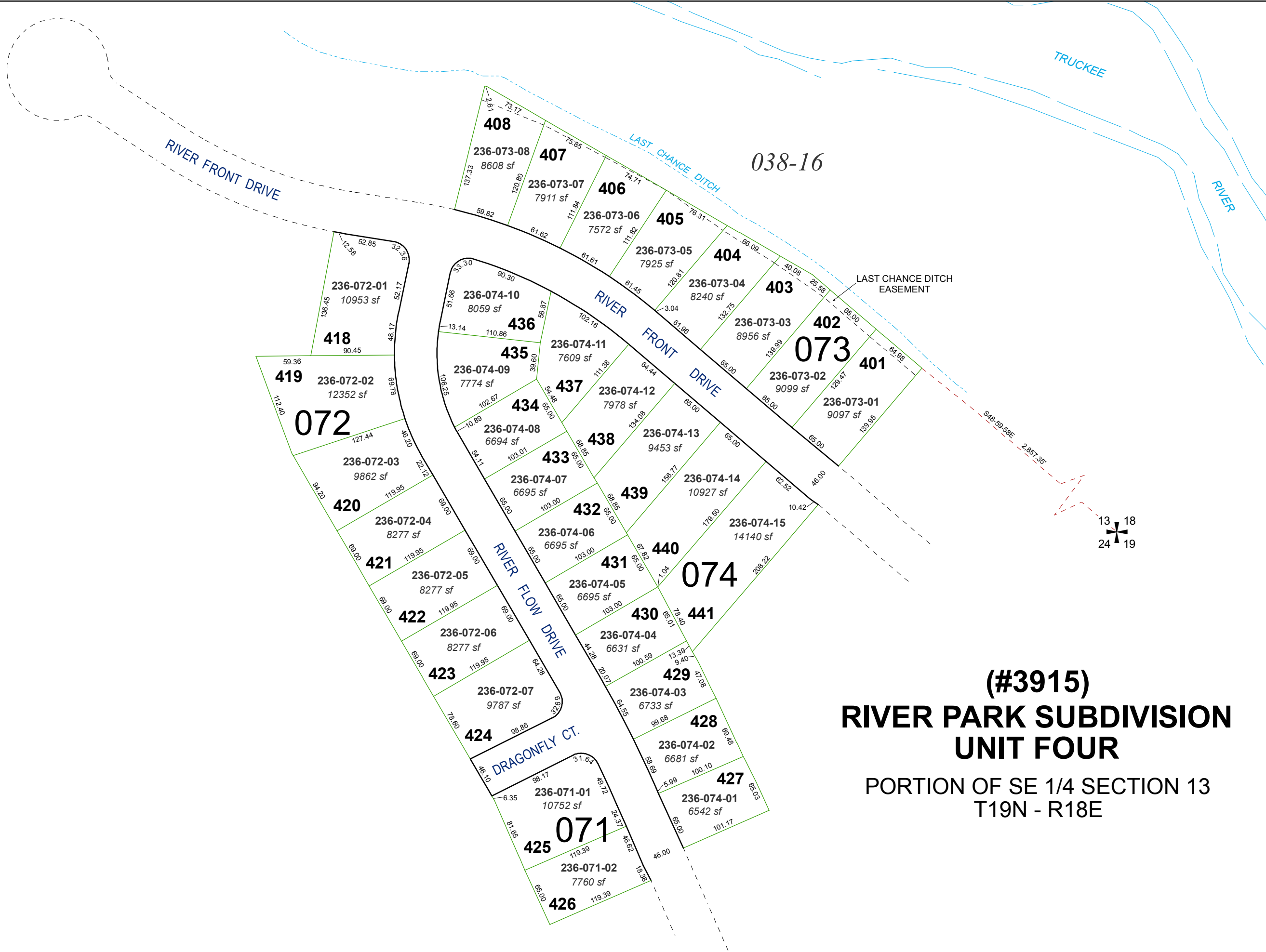
created by: KSB 1/27/2012

last updated: _____

area previously shown on map(s)

038-53

NOTE: This map was prepared for the use of the Washoe County Assessor for assessment and illustrative purposes only. It does not represent a survey of the premises. No liability is assumed as to the sufficiency or accuracy of the data delineated hereon.



038-16

073

072

074

(#3915) RIVER PARK SUBDIVISION UNIT FOUR

PORTION OF SE 1/4 SECTION 13
T19N - R18E

13 18
24 19