

BOOK 160

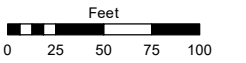
(#4440) DOUBLE DIAMOND RANCH VILLAGE 8B PORTION OF THE NE 1/4 OF SEC. 16 T18N - R20E

Assessor's Map Number

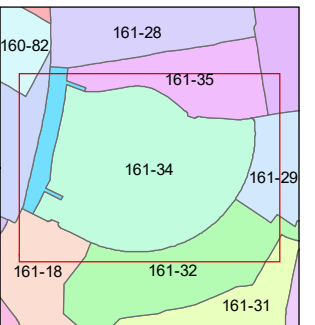
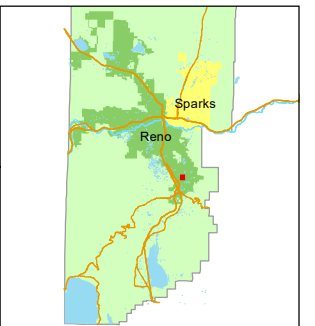
161-34

STATE OF NEVADA
WASHOE COUNTY
ASSESSOR'S OFFICE

1001 East Ninth Street, Building D
Reno, Nevada 89512
(775) 328-2231



1 inch = 100 feet



created by: KDW 8/25/2025

updated: _____

area previously shown on map(s):

161-18

NOTE: This map was prepared for the use of the Washoe County Assessor for assessment and illustrative purposes only. It does not represent a survey of the premises. No liability is assumed as to the sufficiency or accuracy of the data delineated hereon.

161-33

161-32

