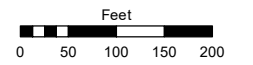


PORTION OF S½ SECTION 10
T17N - R19E

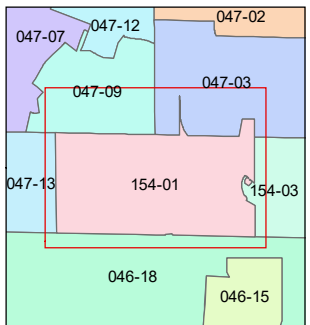
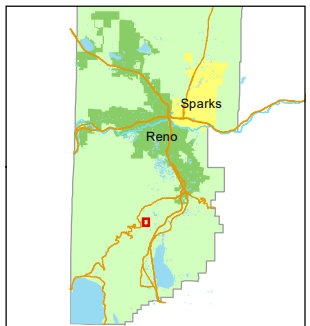
(#3059)
NADIA COURT SUBDIVISION

Assessor's Map Number
154-01

STATE OF NEVADA
WASHOE COUNTY
ASSESSOR'S OFFICE
1001 East Ninth Street, Building D
Reno, Nevada 89512
(775) 328-2231



1 inch = 200 feet

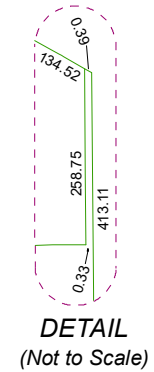


created by: KSB 3/07/2012

updated: KSB 5/08/15 JRA 6/15/21

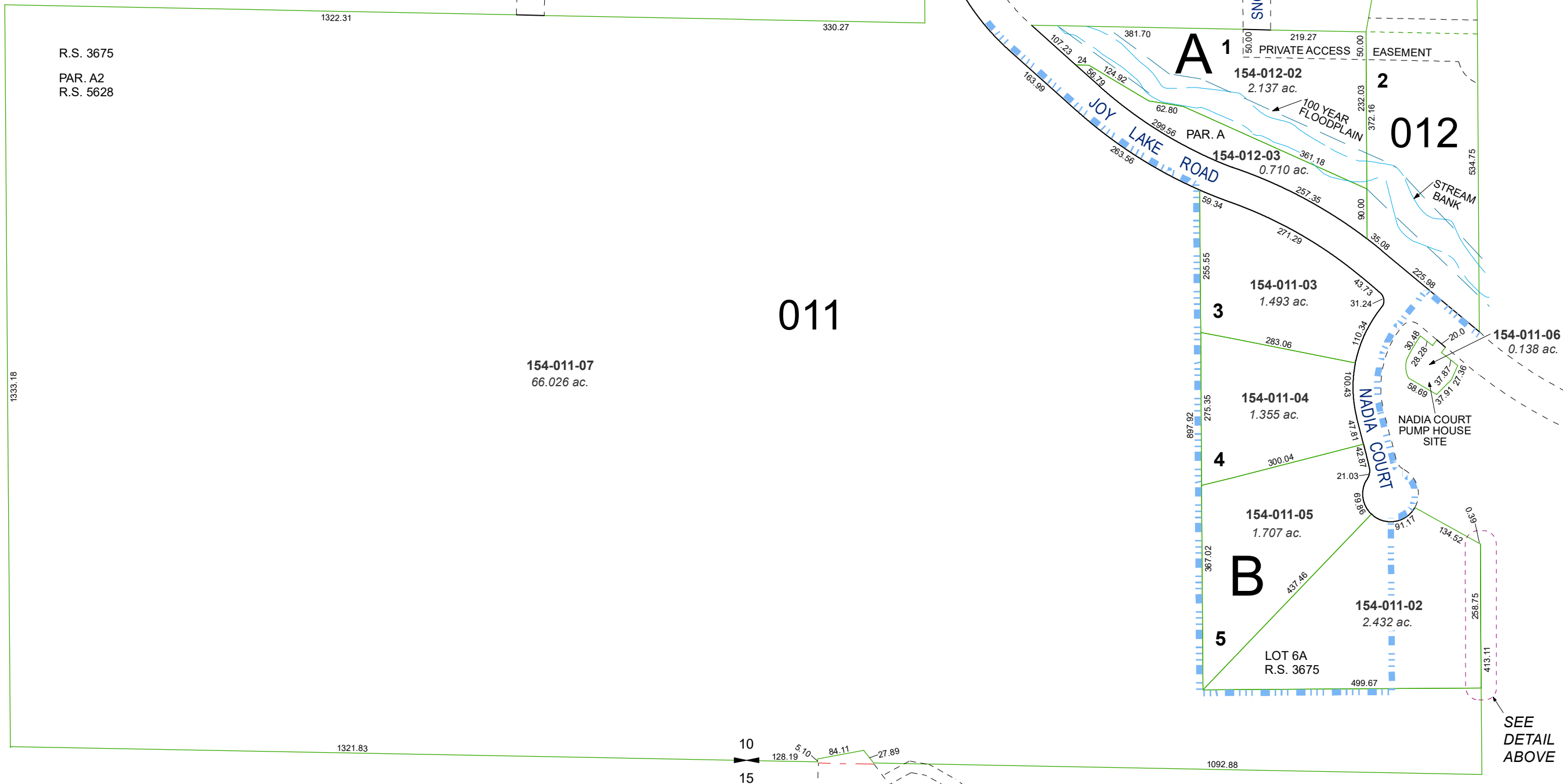
area previously shown on map(s):
047-01, 047-03

NOTE: This map was prepared for the use of the Washoe County Assessor for assessment and illustrative purposes only. It does not represent a survey of the premises. No liability is assumed as to the sufficiency or accuracy of the data delineated hereon.



GREEN ASH RD.

SNOW FLOWER DR.



BENNINGTON COURT WATER TANK SITE

R.S. 3675
PAR. A2
R.S. 5628

