

(#1126) TYROLIAN VILLAGE UNIT NO. 3

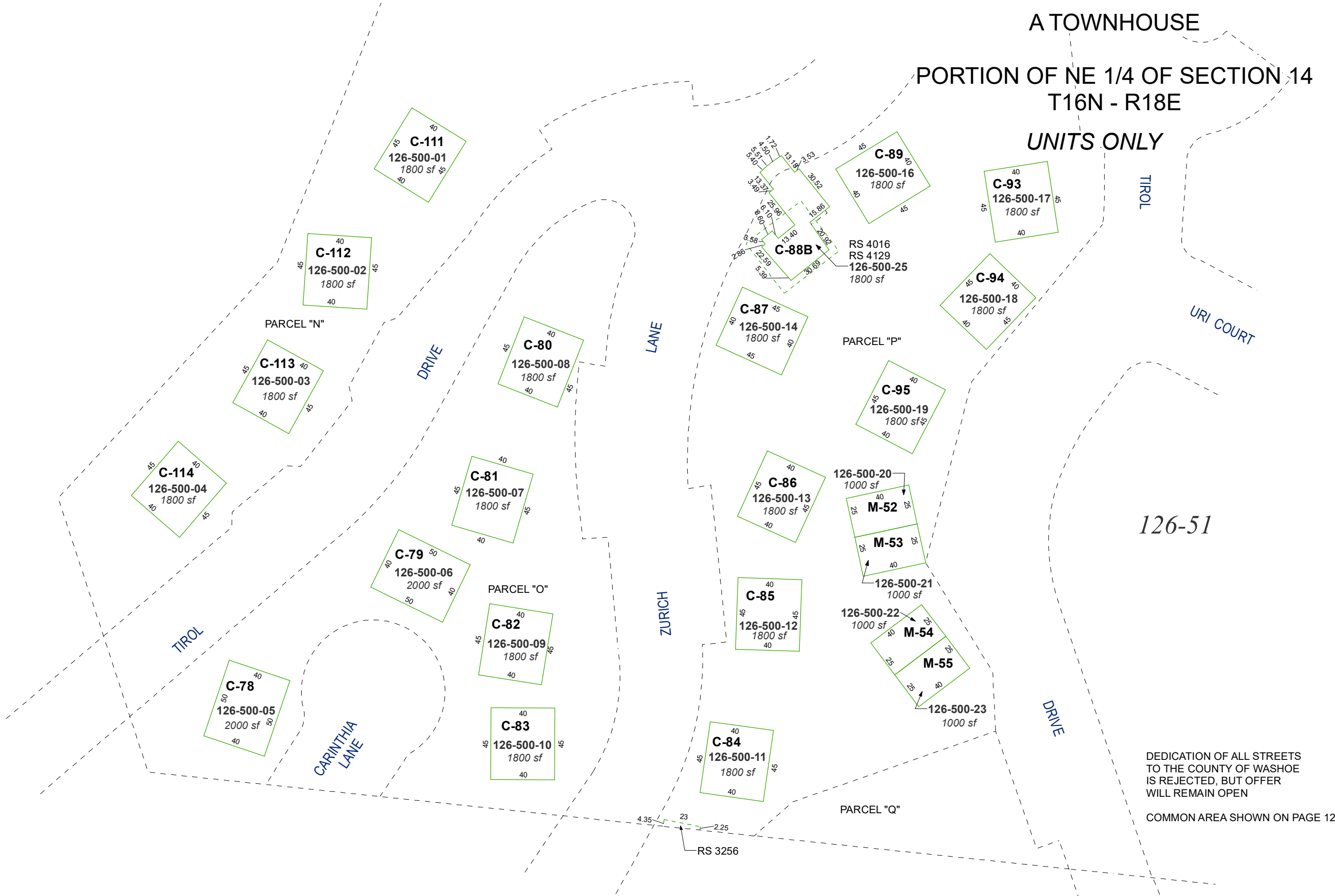
A TOWNHOUSE

PORTION OF NE 1/4 OF SECTION 14
T16N - R18E

UNITS ONLY

126-49

126-51

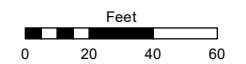


Assessor's Map Number

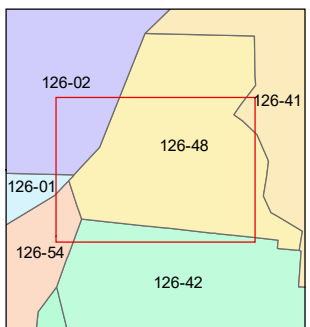
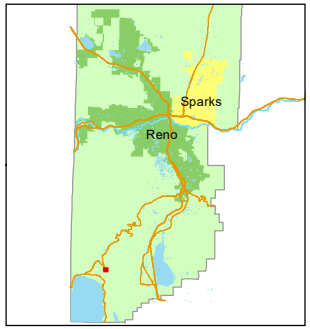
126-50

STATE OF NEVADA
WASHOE COUNTY
ASSESSOR'S OFFICE

1001 East Ninth Street, Building D
Reno, Nevada 89512
(775) 328-2231



1 inch = 60 feet



created by: TWT 9/3/2009
updated: KGC 11/7/2024

area previously shown on map(s):
126-41

DEDICATION OF ALL STREETS
TO THE COUNTY OF WASHOE
IS REJECTED, BUT OFFER
WILL REMAIN OPEN

COMMON AREA SHOWN ON PAGE 126-48

NOTE: This map was prepared for the use of the Washoe County Assessor for assessment and illustrative purposes only. It does not represent a survey of the premises. No liability is assumed as to the sufficiency or accuracy of the data delineated hereon.