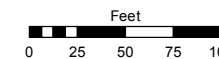
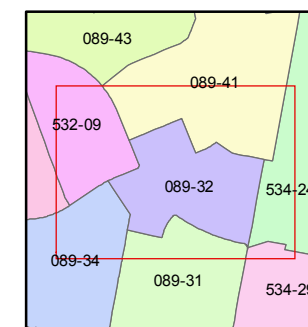
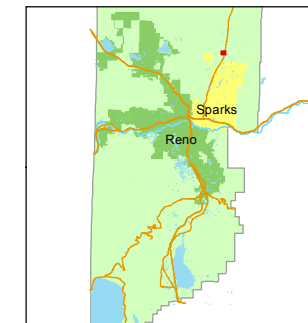


STATE OF NEVADA
WASHOE COUNTY
ASSESSOR'S OFFICE
Michael E. Clark, Assessor

1001 East Ninth Street
Building D
Reno, Nevada 89512
(775) 328-2231



1 inch = 100 feet



created by: TWT 12/5/2011

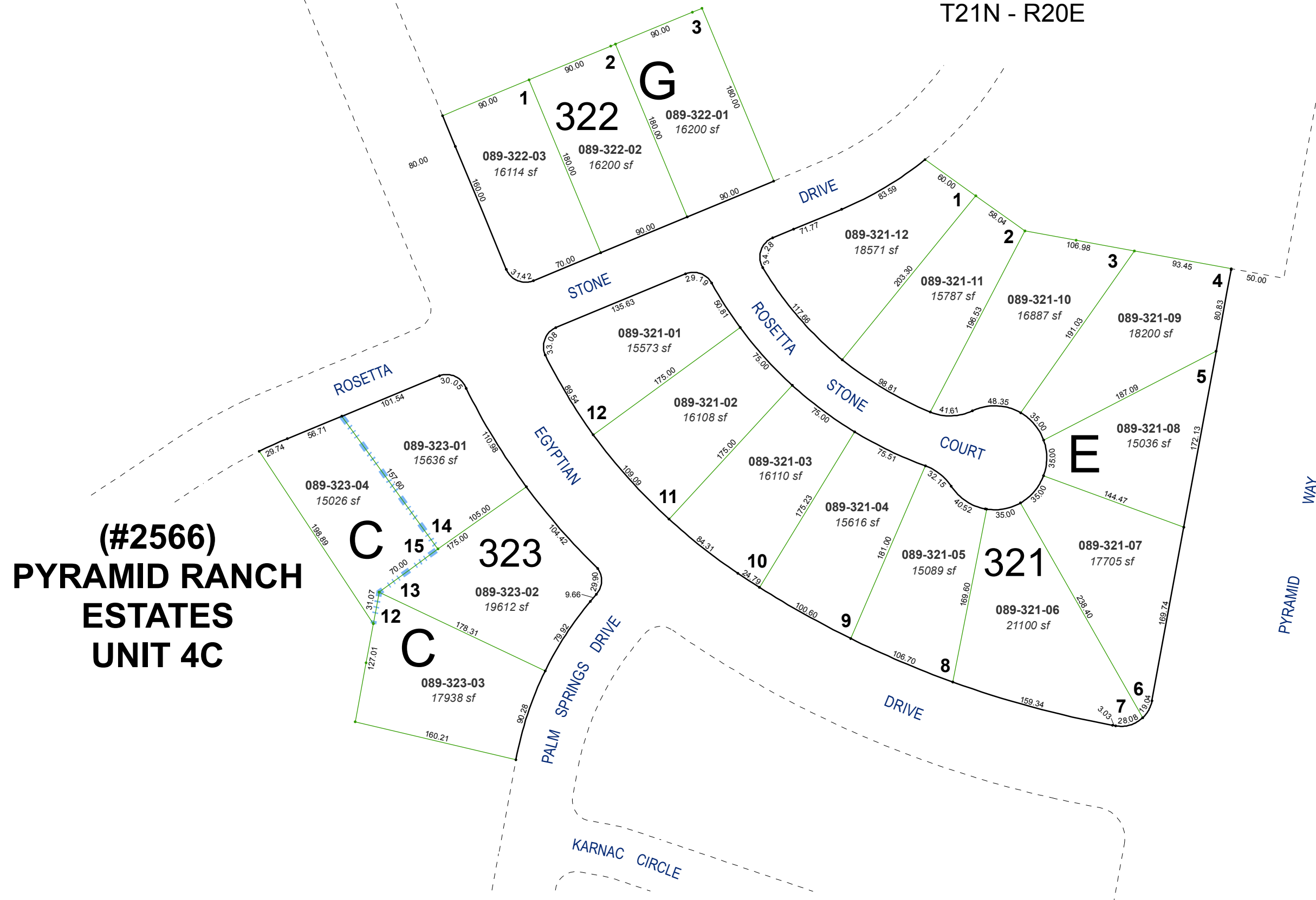
last updated: _____

area previously shown on map(s)

NOTE: This map was prepared for the use of the Washoe County Assessor for assessment and illustrative purposes only. It does not represent a survey of the premises. No liability is assumed as to the sufficiency or accuracy of the data delineated herein.

(#2499) PYRAMID RANCH ESTATES UNIT 4B

POR. OF SW 1/4 OF SEC. 26
T21N - R20E



(#2566) PYRAMID RANCH ESTATES UNIT 4C

