

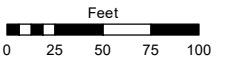
(#173)
NEULANDS HEIGHTS
 PORTION OF SW¼ SECTION 11
 & NW¼ SECTION 14
 T19N - R19E

Assessor's Map Number

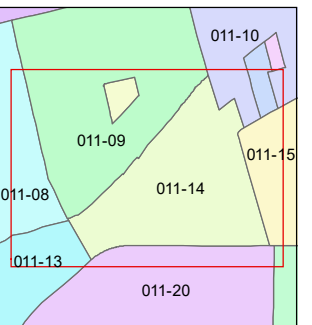
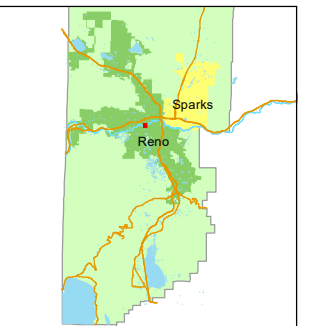
011-14

STATE OF NEVADA
WASHOE COUNTY
ASSESSOR'S OFFICE

1001 East Ninth Street, Building D
 Reno, Nevada 89512
 (775) 328-2231



1 inch = 100 feet

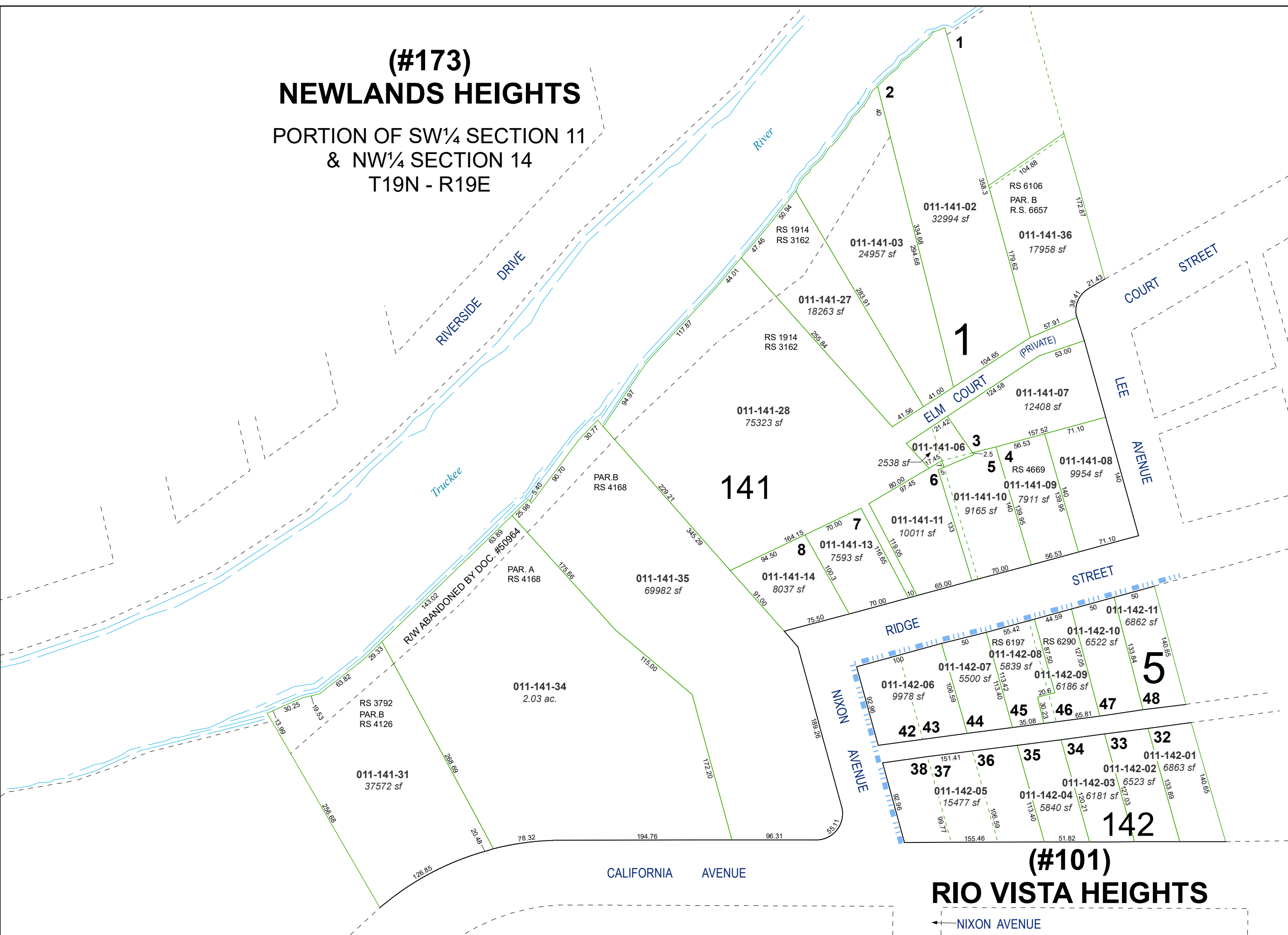


created by: TWT 3/14/2013

updated: SR 9/21/21 JKF 9/30/25

area previously shown on map(s):

NOTE: This map was prepared for the use of the Washoe County Assessor for assessment and illustrative purposes only. It does not represent a survey of the premises. No liability is assumed as to the sufficiency or accuracy of the data delineated hereon.



(#101)
RIO VISTA HEIGHTS

NIXON AVENUE