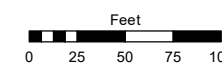
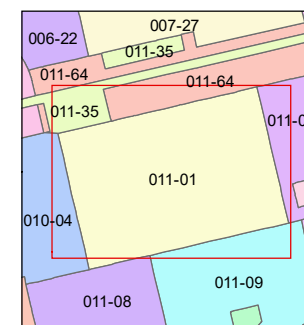
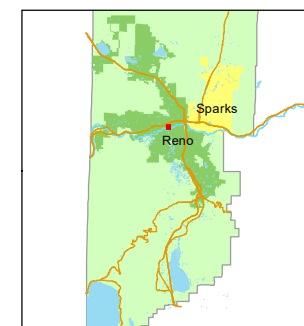


STATE OF NEVADA  
**WASHOE COUNTY**  
ASSESSOR'S OFFICE

1001 East Ninth Street, Building D  
Reno, Nevada 89512  
(775) 328-2231



1 inch = 100 feet



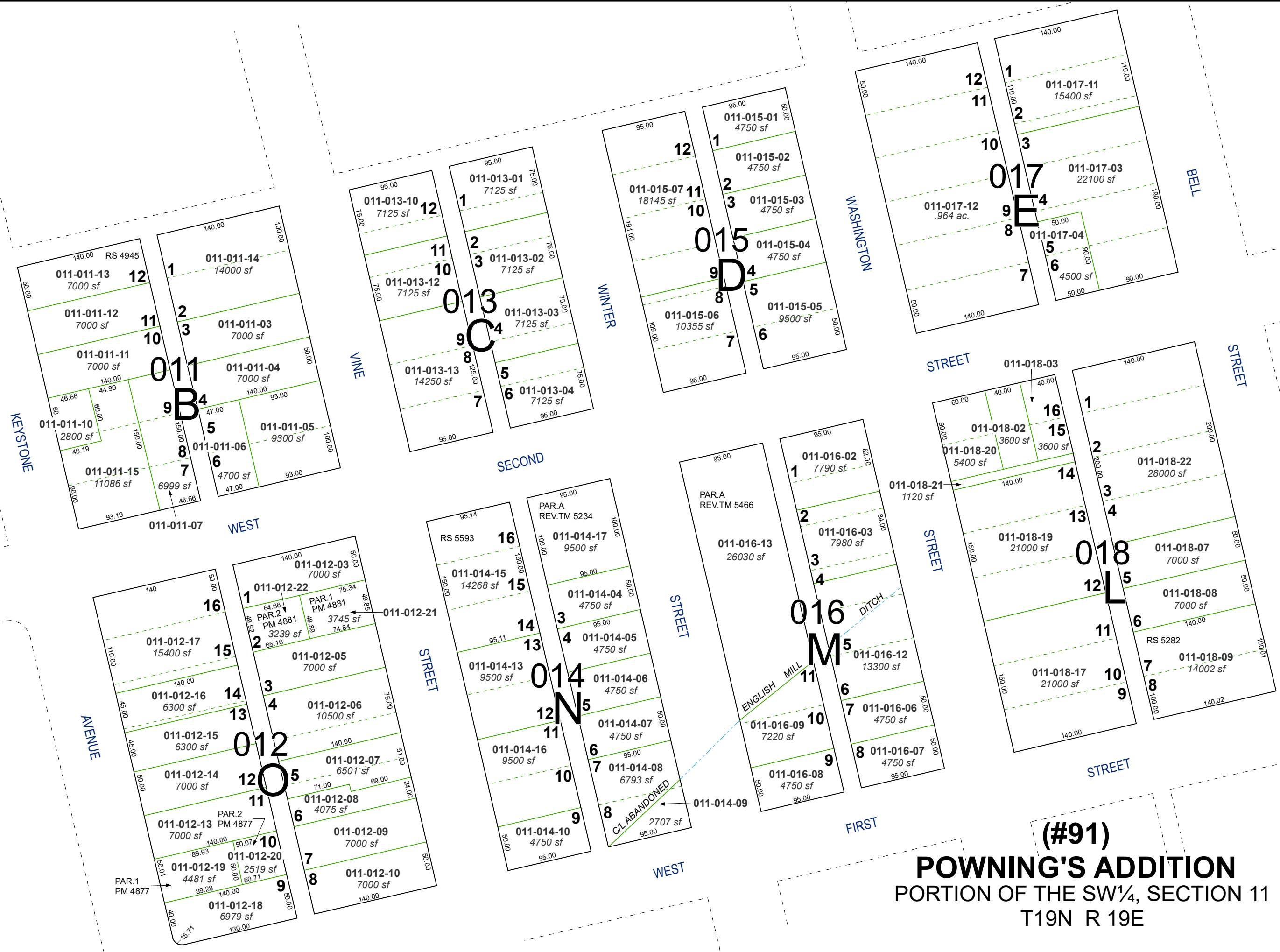
created by: CFB 03/22/2010

updated: JKF 11/01/17 SR 09/16/21

SR 01/06/22

area previously shown on map(s):

NOTE: This map was prepared for the use of the Washoe County Assessor for assessment and illustrative purposes only. It does not represent a survey of the premises. No liability is assumed as to the sufficiency or accuracy of the data delineated hereon.



**(#91)**  
**POWNING'S ADDITION**  
PORTION OF THE SW¼, SECTION 11  
T19N R 19E